



BMPM060 60 Quart Planetary Mixer Parts Breakdown



Questions? Contact Us:

Toll Free: 1-800-565-2253

Email: Info@BakeMax.com

www.BakeMax.com

Warranty Registration

www.BakeMax.com/Warranty-Registration

Image 1

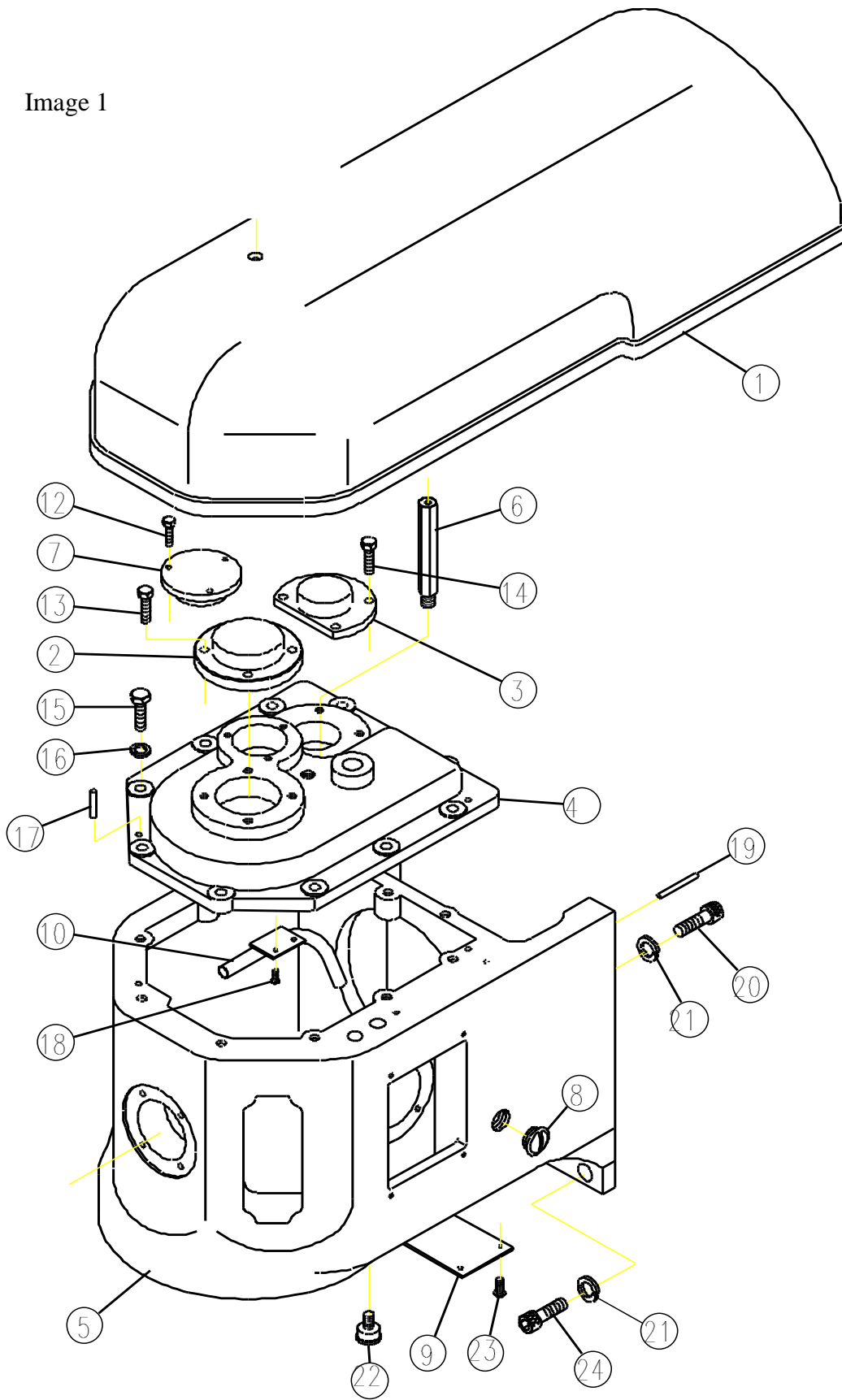


Image 1	Description or Name	HL Part No.	Qty		Remark
1	Top Cover	11091-01-001	1		
2	Planetary Bearing Retainer	11091-01-002	1		
3	Bearing Retainer	11091-01-003	1		
4	Gear Housing Cover	11091-01-004	1		
5	Transmission Case	11091-01-005	1		
6	Support of Top Cover	11091-01-006	1		
7	Bearing Retainer	11091-01-007	1		
9	Plate	11091-01-009	1		
10	Oil Delivery Tube	11091-01-010	1		
11	Mach Screw 1/4" * 3/4"	S+F1/4*3/4	1		
12	Bolt 1/4" * 5/8"	S-1/4*5/8	3		
13	Bolt 5/16" * 3/4"	S-5/16*3/4	4		
14	Bolt 5/16" * 1"	S-5/16*1	4		
15	Bolt 3/8" * 1-1/4"	S-3/8*1-1/4	11		
17	Spring Pin 6*28	SPP-6*28	2		
18	Mach Screw 3/16" * 3/4"	S+R3/16*3/4	2		
19	Spring Pin 10*50	SPP-10*50	2		
20	Cap Screw 1/2" * 2-1/4"	S-C-1/2*2-1/4	4		
21	Spring Washer 1/2"	SW-1/2	6		
22	Plug	712-050	1		
23	Mach Screw 3/16" * 3/8"	S+R3/16*.3/8	4		
24	Cap Screw 1/2" * 1-1/4"	S-C-1/2*1-1/4	2		

Image 2

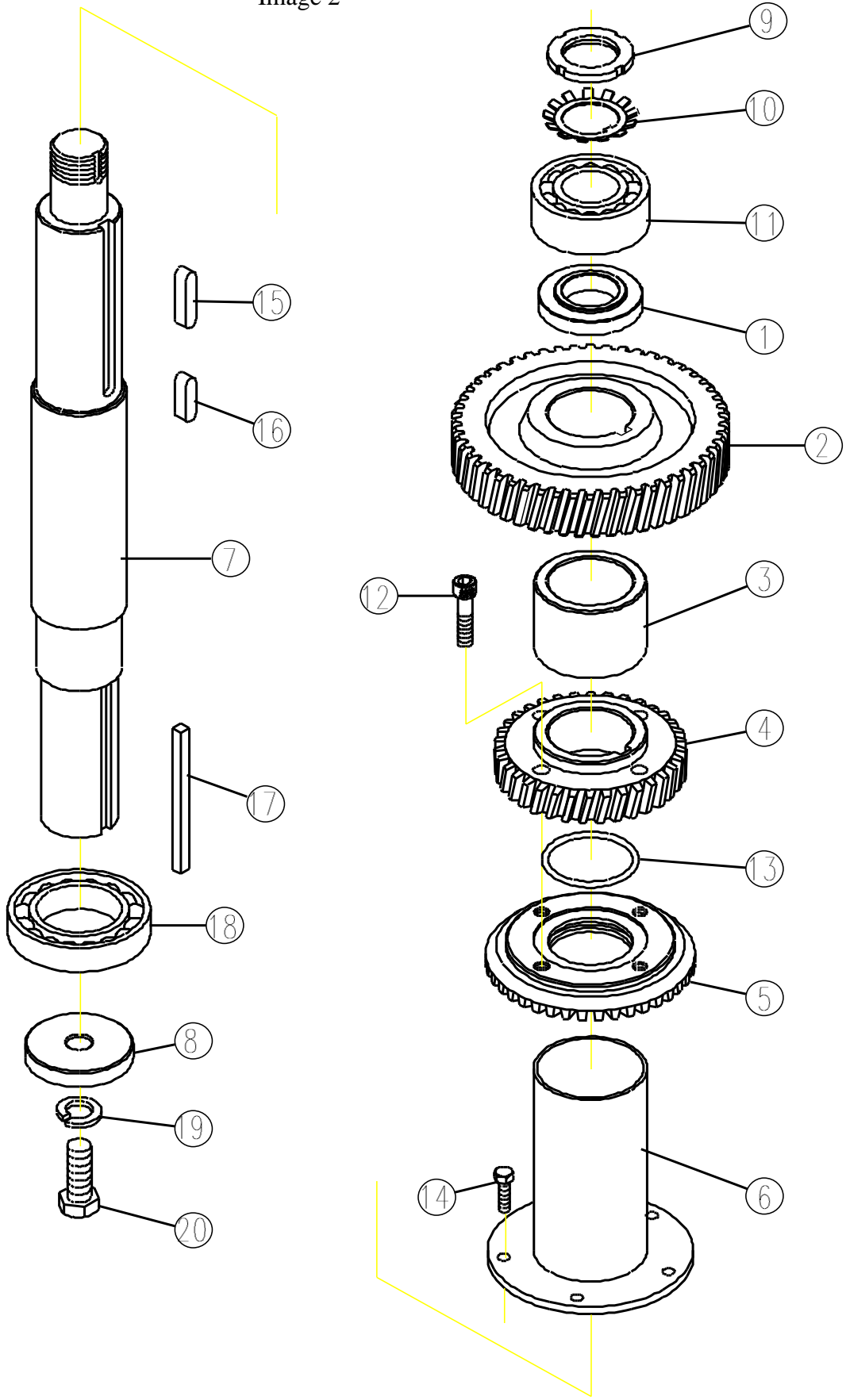


Image 2	Description or Name	HL part No.	Qty		Remark
1	Shim	11091-02-001	1		
2	Gear (53 T)	11091-02-002	1		
3	spacer	11091-02-003	1		
4	Gear (35T)	11091-02-004	1		
5	Bevel Gear (41 T)	11091-02-005	1		
6	Chimney	11091-02-006	1		
7	Planetary Shaft	11091-02-007	1		
8	Washer	11091-02-008	1		
9	Lock Nut M30	MN30	1		
10	Lock Washer 30	M30	1		
11	Ball Bearing 5206Z	BR-5206Z	1		
12	Cap Screw 5/16"*1-1/4"	S-C-5/16*1-1/4	4		
13	O Snap Ring P45	OR-P45	1		
14	Mach Screw 1/4"*5/8"	S+F1/4*5/8	5		
15	Key 8*8*38	KR-8*8*38	1		
16	Key 8 *8 *27	KR-8*8*27	1		
17	Key 1/4"*1/4"*95	KR-1/4*1/4*95	1		
18	Ball Bearing 6009Z	BR-6009Z	1		
19	Spring Washer 1/2"	SW-1/2	1		
20	Cap Screw 1/2"*1"	S-C-1/2*1	1		

Image 3

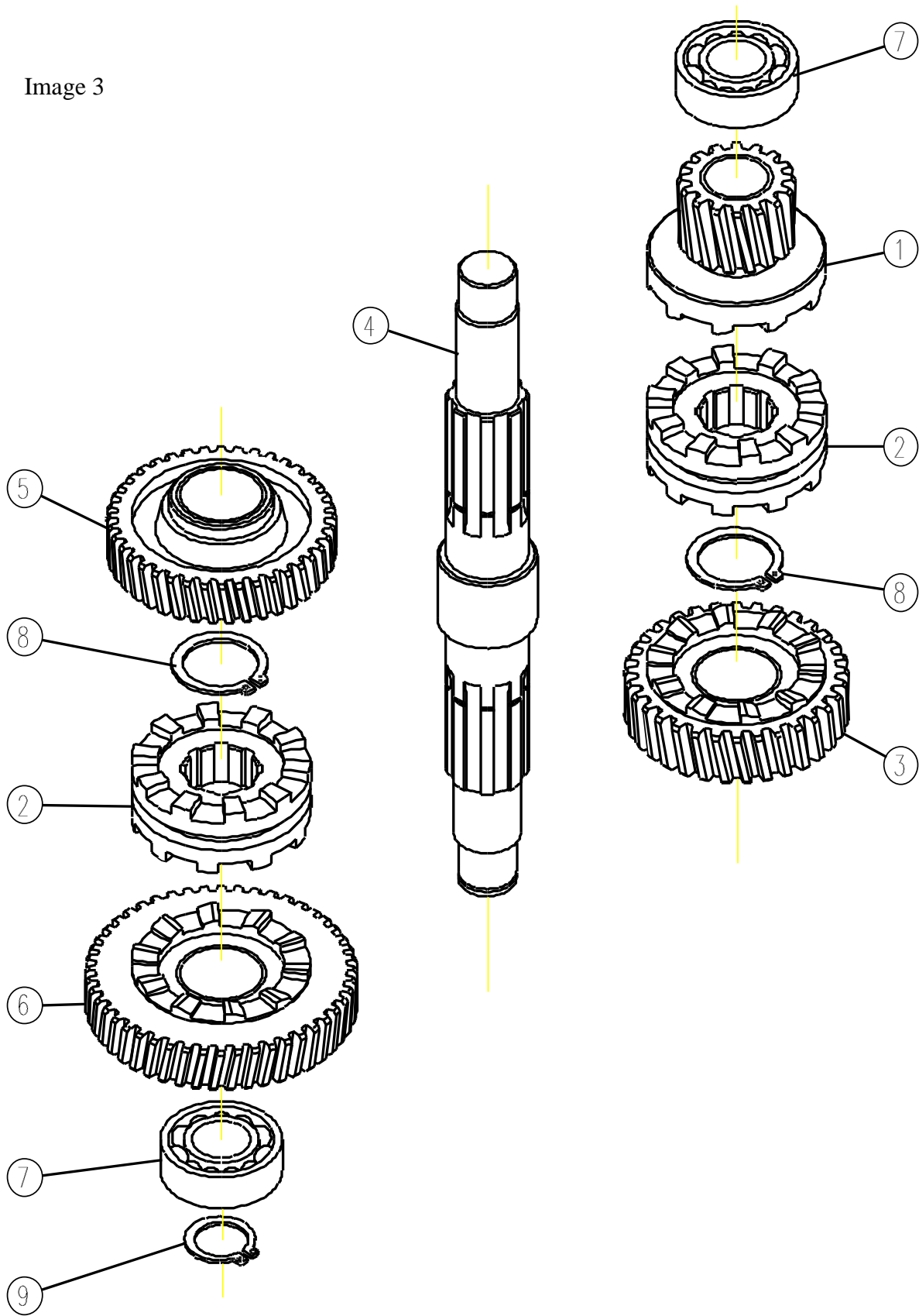


Image 3	Description or Name	HL Part No.	Qty		Remark
1	Clutch & Gear (17T)	11091-03-001	1		
2	Shifting Clutch	11091-03-002	1		
3	Clutch & Gear (33T)	11091-03-003	1		
4	Shifting Shaft	11091-03-004	1		
5	Clutch & Gear (41T)	11091-03-005	1		
6	Clutch & Gear (49T)	11091-03-006	1		
7	Ball Bearing 6205Z	BR-6205Z	2		
8	C-Type Snap Ring S35	CR-S35	2		
9	C-Type Snap Ring S25	CR-S25	1		
10	Spacer	11091CU2	2		
11	Spacer	11091CU1	2		

Image 4

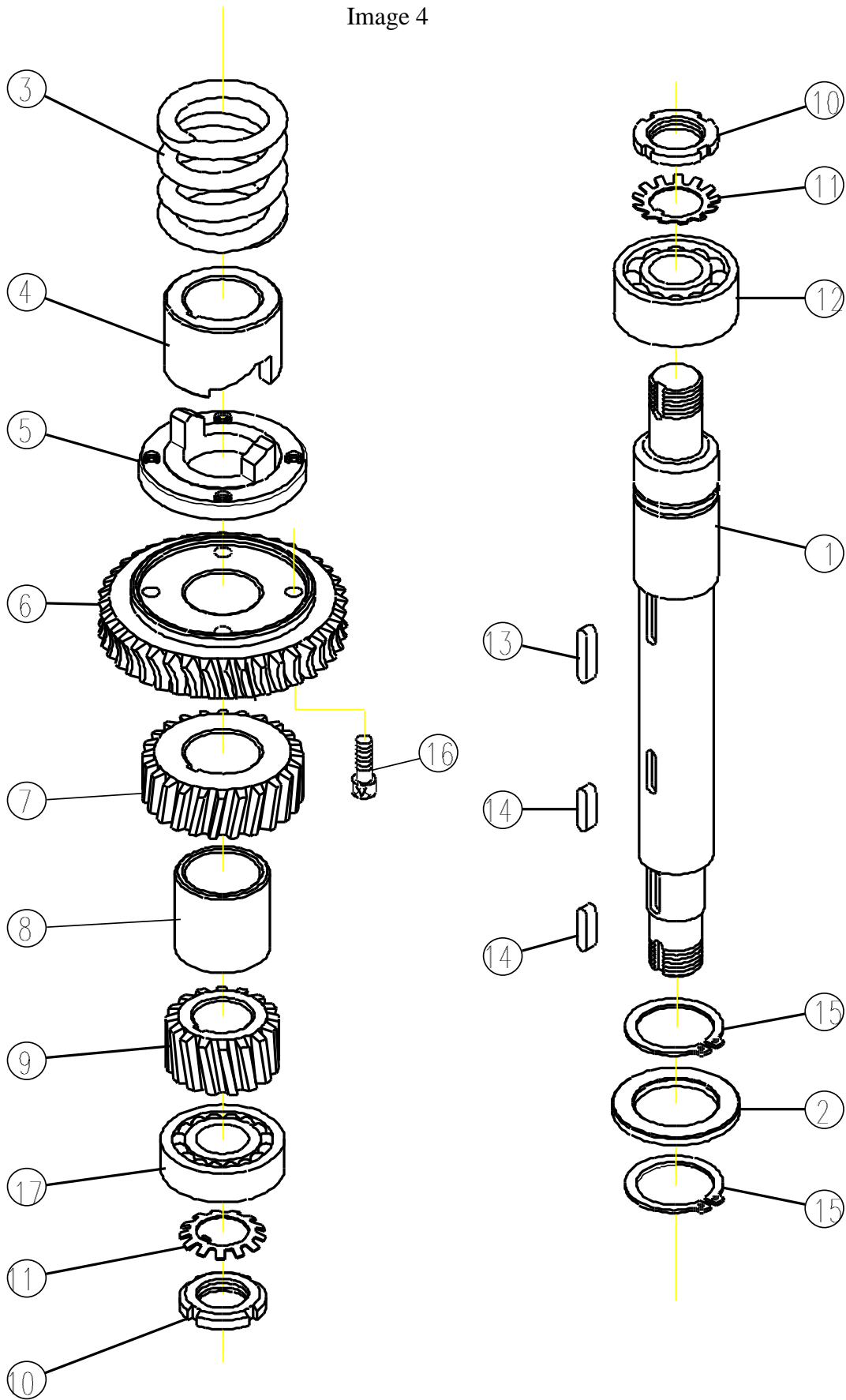


Image 4	Description or Name	HL Part No.	Qty		Remark
1	Worm Gear Shaft	11091-04-00 1	1		
2	Spacer	11091-04-00 2	1		
3	Compression Spring	11091-04-00 3	1		
4	Compressor-Shock	11091-04-00 4	1		
5	Flange-Shock	11091-04-00 5	1		
6	Worm Gear	11091-04-00 6	1		
7	Gear (25 T)	11091-04-00 7	1		
8	Spacer	11091-04-00 8	1		
9	Gear (17T)	11091-04-00 9	1		
10	Lock Nut M20	MN20	2		
11	Lock Washer 20	M20	2		
12	Ball Bearing 5204Z	BR-5204Z	1		
13	Key 5*5*25	KRR-5*5*25	1		
14	Key 5*5*20	KRR-5*5*20	2		
15	C-Type Snap Ring S32	CR-S32	2		
16	Cap Screw 1/4"*1"	S-C-1/4*1	4		
17	Ball Bearing 1204	BR-1204	1		

Image 5

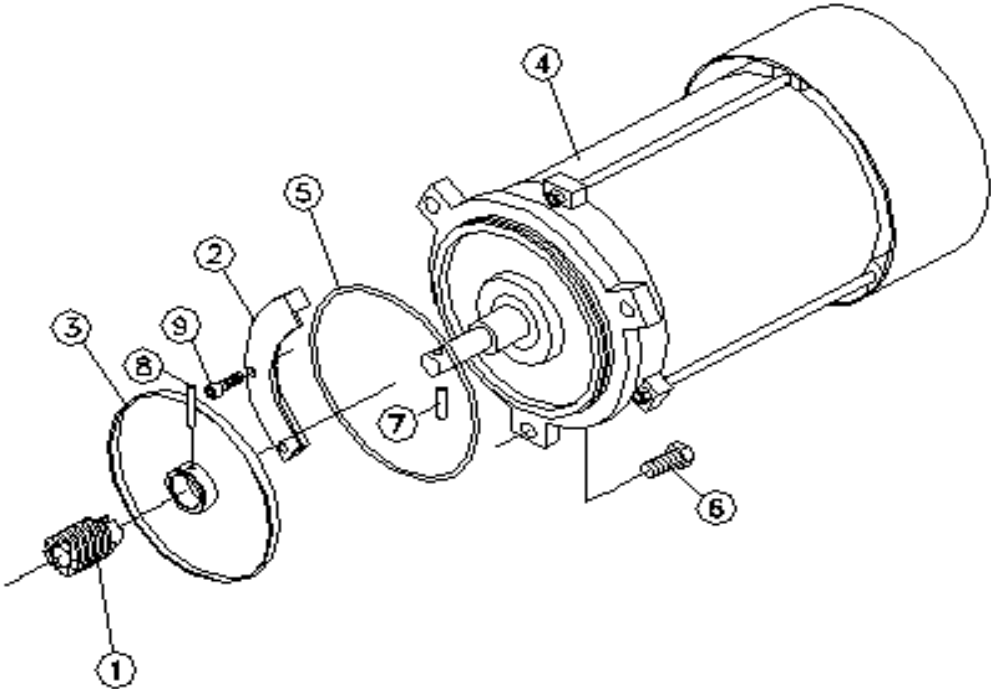


Image 5	Description or Name	HL Part No.	Qty		Remark
1	Worm	11091-05-001	1		
2	Guide of Oil Flinger	11091-05-002	1		
3	Flinger & Hub	11091-05-003	1		
4	Motor	11091-05-004	1		
5	O Snap Ring 175*3.5	OR-175*3.5	1		
6	Bolt 1/2*1-1/2	S-1/2*1-1/2	3		
7	PARALLEL PIN 6*29	PARALLELPIN-6*29	1		
8	Spring Pin 6*40	SPP-6*40	1		
9	Cap Screw 5/16*1	S-C-5/16*1	2		

Image 6

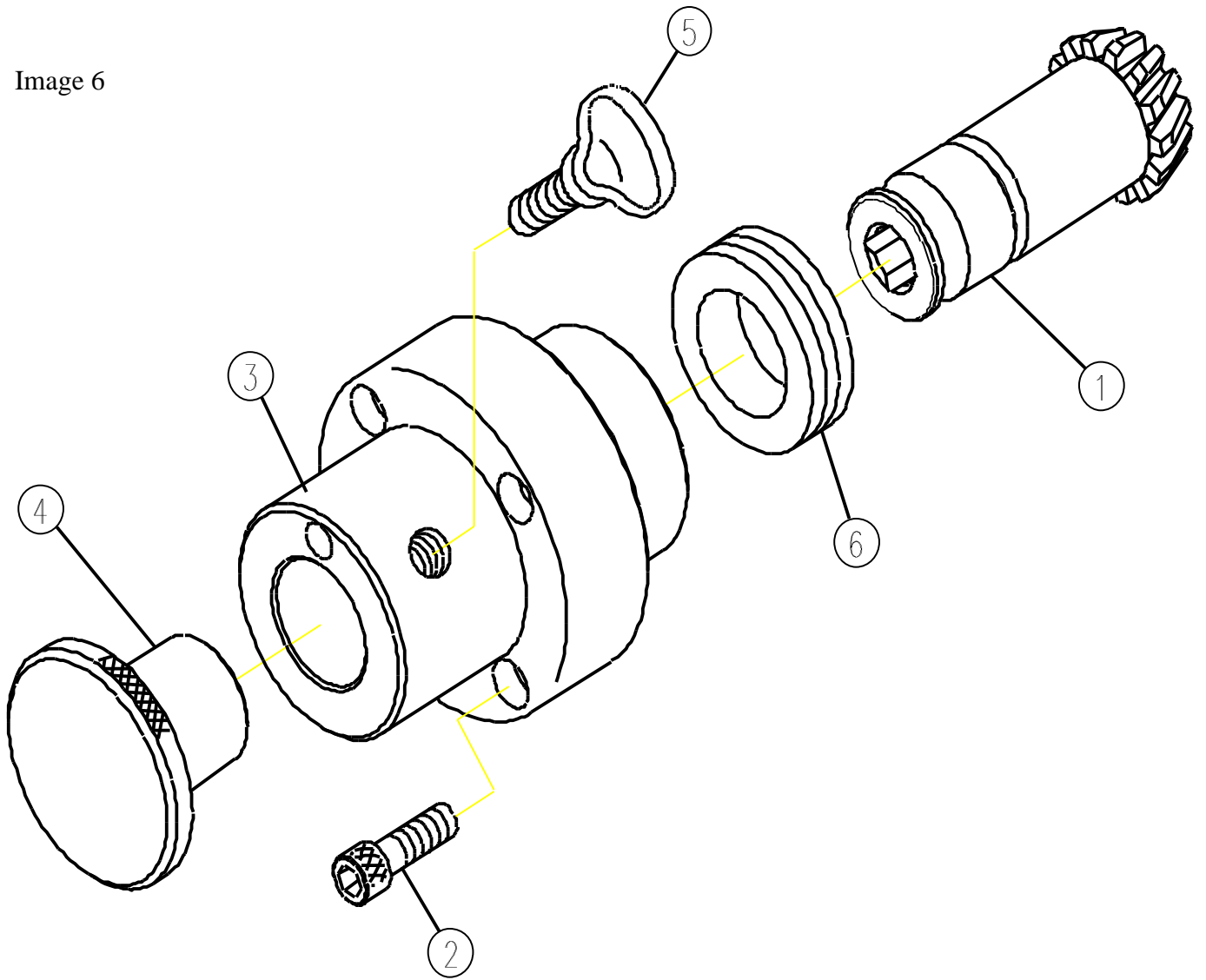


Image 6	Description or Name	HL Part No.	Qty	Remark
---------	---------------------	-------------	-----	--------

1	Bevel Pinion (16T)	11091-06-001	1		
2	Cap Screw 5/16"*1-1/4"	S-C-5/16*1-1/4	4		
3	Hub Attachment	11091-06-003	1		
4	Attachment Hole Plug	11091-06-004	1		
5	Thumb Screw	11031-06-005	1		
6	Ball Bearing 2907	BR-2907	1		

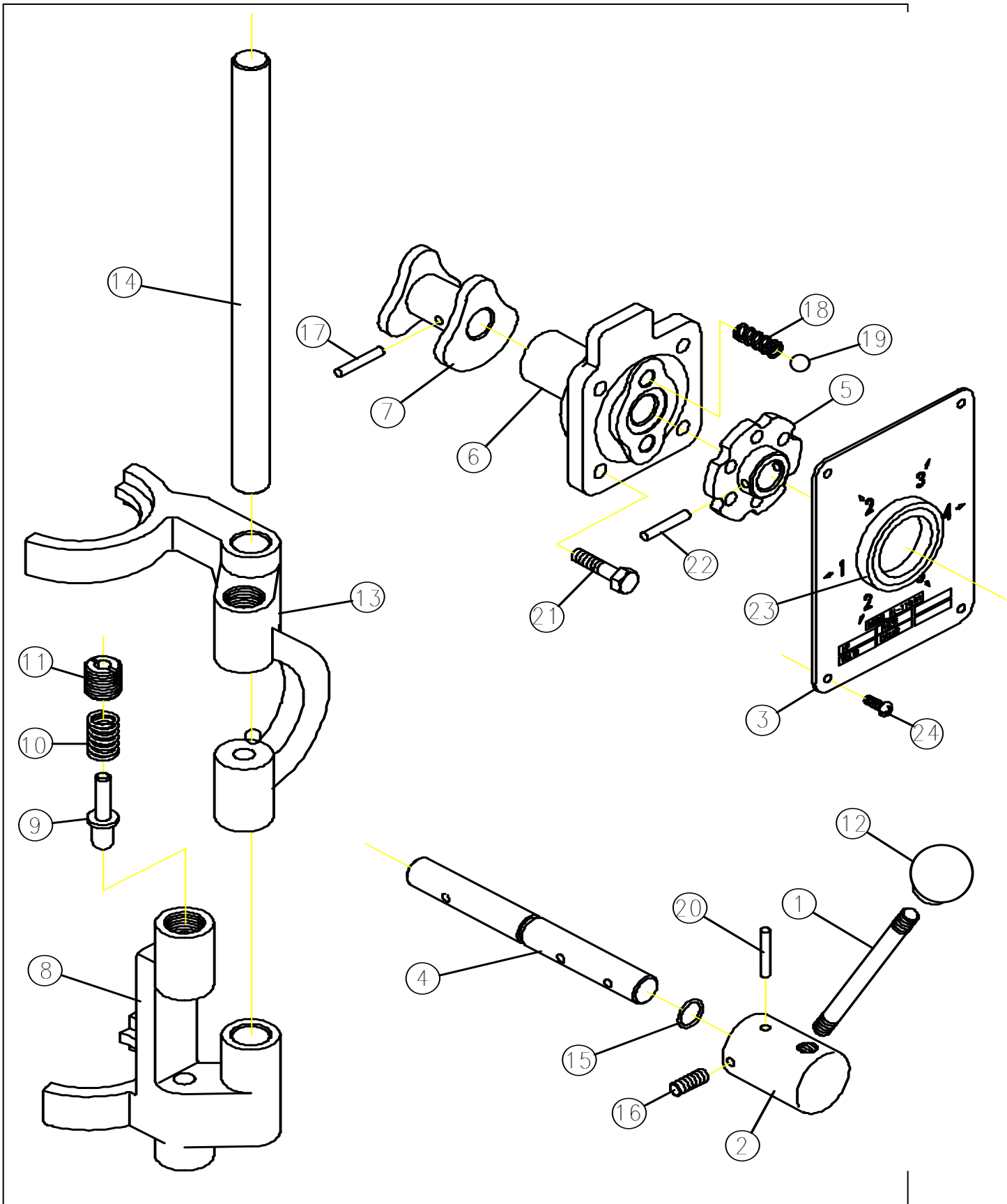


Image	Description or Name	HL Part No.	Qty		Remark
7					
1	Shift Handle	11091-07-001	1		

2	Handle Base	11091-07-002	1		
3	Control Panel	11091-07-003	1		
4	Shaft	11091-07-004	1		
5	Hub & Cam	11091-07-005	1		
6	Bracket Gear Shift	11091-07-006	1		
7	Shift Cam	11091-07-007	1		
8	Lower Shifting Fork	11091-07-008	1		
9	Shift Fork Plunger	11091-07-009	4		
10	Compression Spring	11091-07-010	4		
11	Screw	11091-07-011	4		
12	Shift Handle Knob	11091-07-012	1		
13	Upper Shifting Fork	11091-07-013	1		
14	Shifter Fixed Shaft	11091-07-014	1		
15	O Snap Ring P12	OR-P12	1		
16	Set Screw 1/4"* 3/8"	S-S1/4*3/8	1		
17	Spring Pin 6*24	SPP-6*24	1		
18	Compression Spring	11091-07-018	2		
19	Steel Ball 8	SB-8	2		
20	Spring Pin 5*36	SPP-5*36	1		
21	Bolt 5/16"*5/8"	S-5/16*5/8	4		
22	Spring Pin 5*28	SPP-5*28	1		
23	Oil Seal TC38*50*08	OS-TC38*50*0 8	1		
24	Mach Screw 3/16"*3/8"	S+R3/16*3/8	4		

Image 8

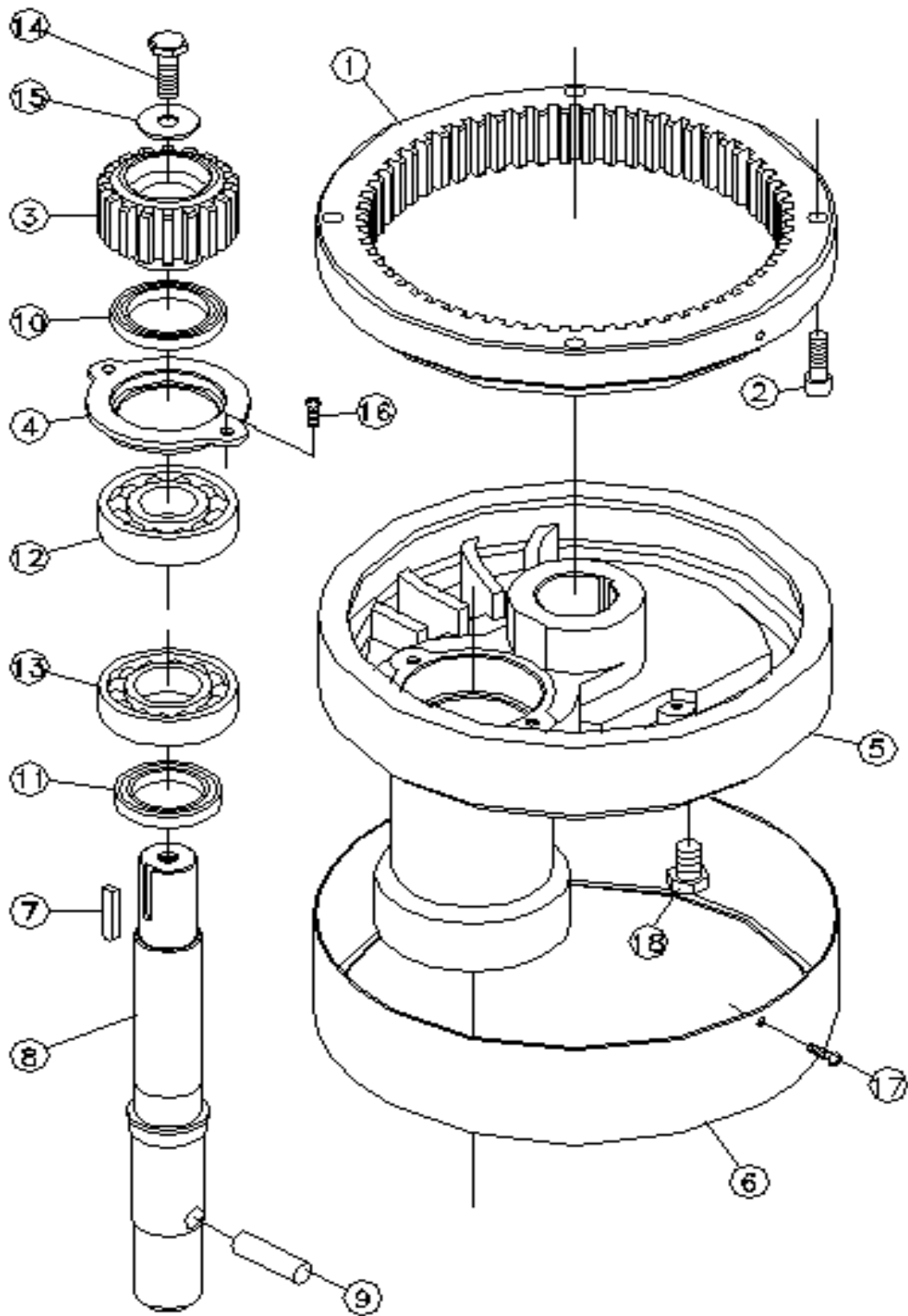


Image 8	Description or Name	HL Part No.	Qty		Remark
1	Internal Drive Gear	11091-08-001	1		
2	Cap Screw 3/8"*1-1/4"	S-C-3/8*1-1/4	4		
3	Internal Pinion (18 T)	11091-08-003	1		
4	Retainer	11091-08-004	1		
5	Planetary Head	11091-08-005	1		
6	Head Ring	11091-08-006	1		
7	Key 6"*6"*35	KR-6*6*35	1		
8	Agitating Shaft	11091-08-008	1		
9	Tapered Pin	11091-08-009	1		
10	Oil Seal TC43*58*07	OS-TC43*58*07	1		
11	Oil Seal TC40*72*10	OS-TC40*72*10	1		
12	Ball Bearing 6306Z	BR-6306Z	1		
13	Ball Bearing 6207Z	BR-6207Z	1		
14	Cap Screw 3/8"*1"	S-C-3/8*1	1		
15	Flat Washer 3/8"	WB-3/8	1		
16	Cap Screw 1/4"*5/8"	S-C-1/4*5/8	2		
17	Mach Screw 3/16"*1/4"	S+R3/16*1/4	2		
18	Bolt 1/2*3/4	S-1/2*3/4	1		

Image 9

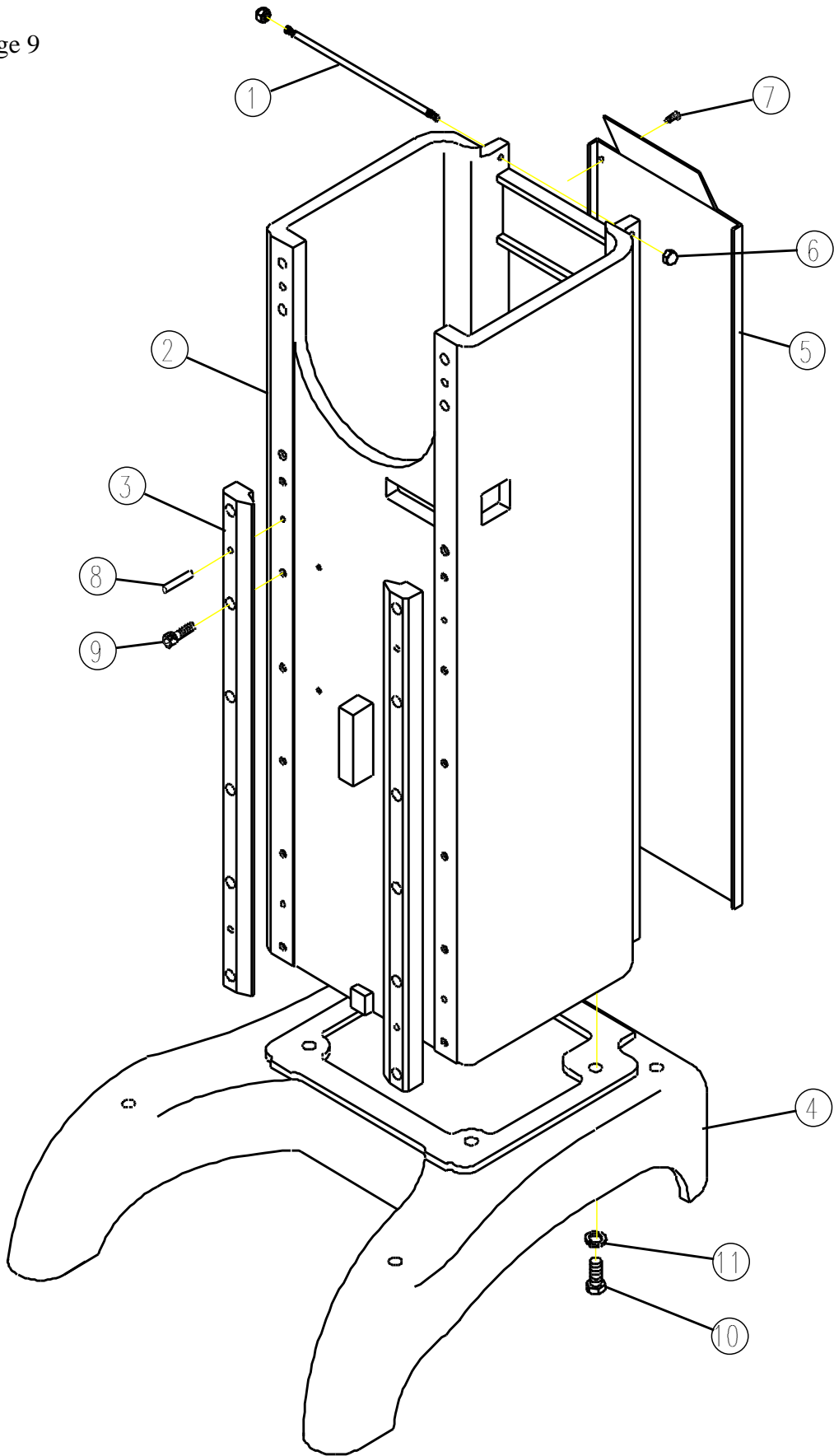


Image 9	Description or Name	HL Part No.	Qty		Remark
1	Fixed Top Cover	11091-09-001	1		
2	Column	11091-09-002	1		
3	Slideway	11091-09-003	2		
4	Base	11091-09-004	1		
	Base	1109S-09-004A	1		
5	Column Cover	11091-09-005	1		
6	Nut 5/16"*18NC	NUT-5/16*18NC	2		
7	Bolt 1/4"*3/8"	S-1/4*3/8	8		
8	Spring Pin 8*50L	SPP-8*50	4		
9	Cap Screw 3/8"*1-1/2"	S-C-3/8*1-1/2	12		
10	Bolt 5/8"*3"	S-5/8*3	4		
11	Spring Washer 5/8"	SW-5/8	4		

Image 10

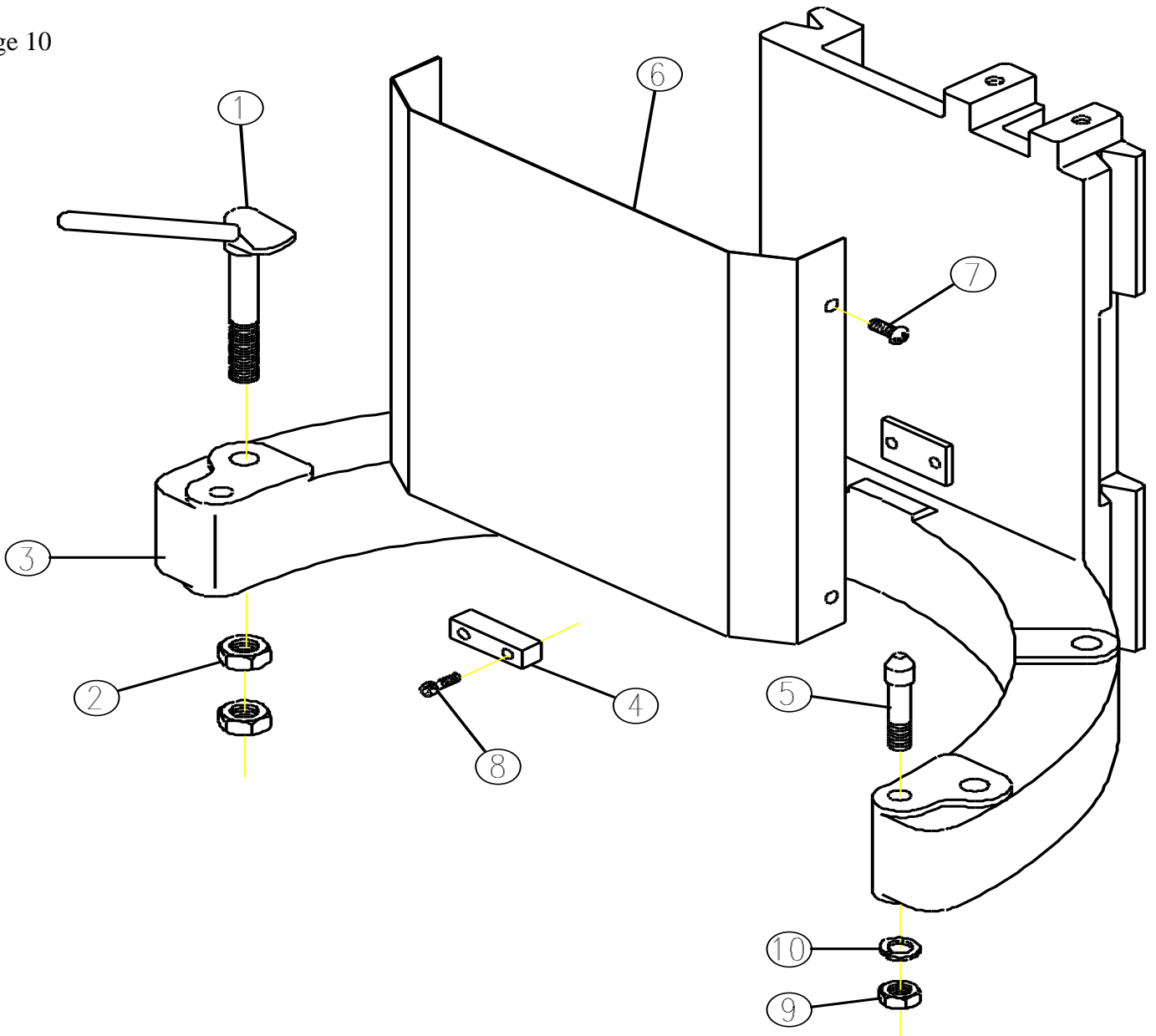


Image 10	Description or Name	HL Part No.	Qty		Remark
1	Bowl Clamp	11091-10-001	2		
1	Screw	11091-10-001C	4		
1	Screw	11091-10-001D	4		
2	Nut W5/8"*11NC	NUT-5/8*11NC	4		
3	Bowl Support	11091-10-003	1		
3	Bowl Support(360Bowl)	11091-12-007C	1		
4	Bowl Retainer	11091-10-004	1		
5	Bowl Locating Pin	11091-10-005	1		
6	Apron	11091-10-006	1		
7	Mach Screw 3/16"*1/4"	S+R3/16*1/4	4		
8	Cap Screw 1/4"*3/4"	S-C-1/4*3/4	2		
9	Nut 1/2"*12NC	NUT-1/2*12NC	2		
10	Washer 1/2"	W-1/2	2		

Image 11

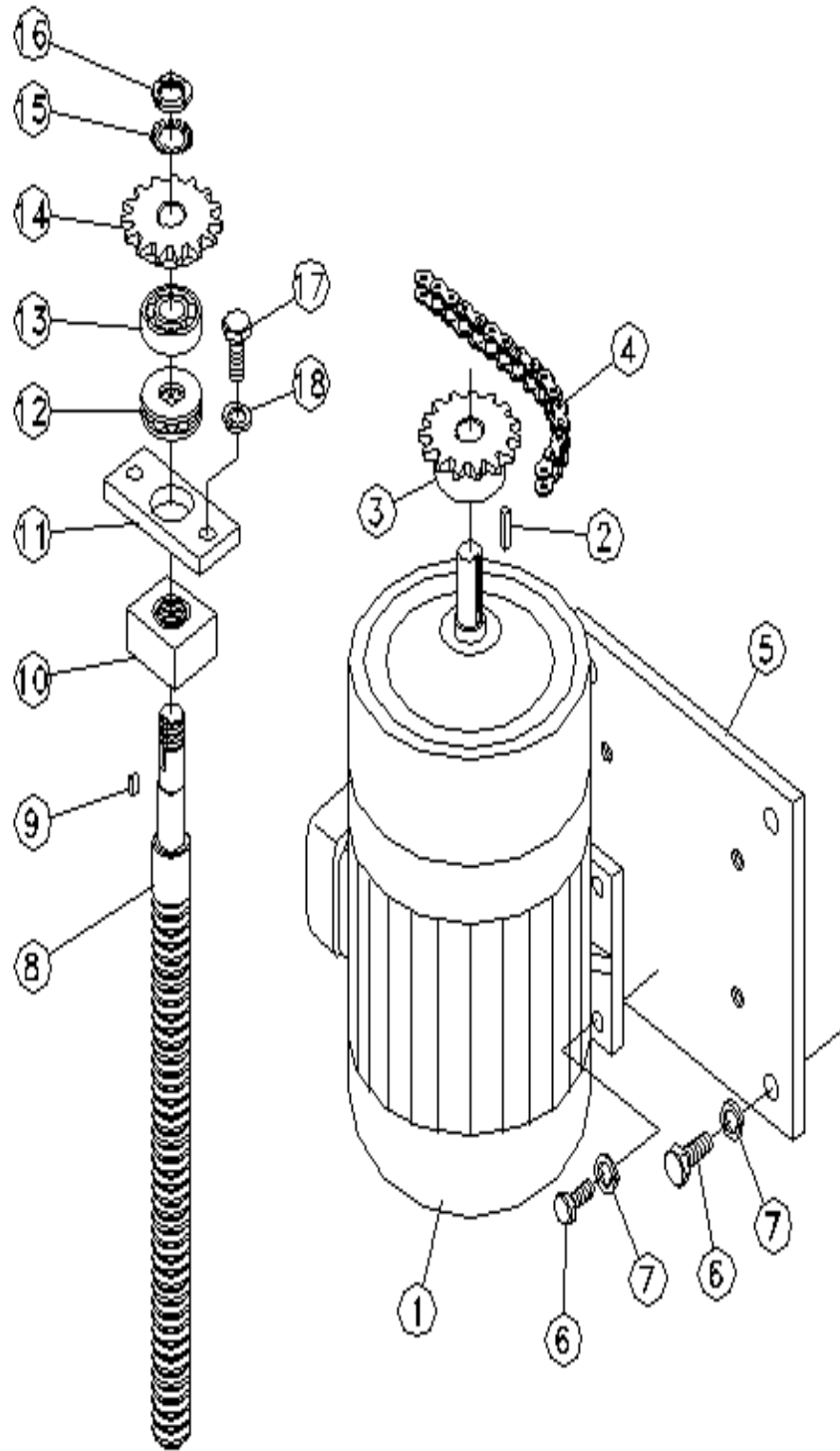


Image 11	Description or Name	AE Part No.	Qty		Remark
1	Reducer Motor	11091-11-001 A	1		
2	Key 7*7*25	KR-7*7*25	1		
3	Chain gear	11091-11-016	1		
4	Chain	BL-04-008	1		
6	Bolt 5/16*1	S-5/16*1	8		
7	Spring Washer 5/16	SW-5/16	8		
8	Lifting Screw	11091-11-007	1		
9	Key 5*5*13	KRR-5*5*13	1		
10	Lifting Nut	11091-11-008	1		
11	Retainer	11091-11-009	1		
12	Ball Bearing #2903	BR-2903	1		
13	Ball Bearing #6203Z	BR-6203Z	1		
14	Chain gear	11091-11-017	4		
15	Lock Washer Ø17	M17	1		
16	Lock Nut M17	MN17	1		
17	Bolt 3/8*1	S-3/8*1	2		
18	Spring Washer 3/8	SW-3/8	2		

Image 11-A

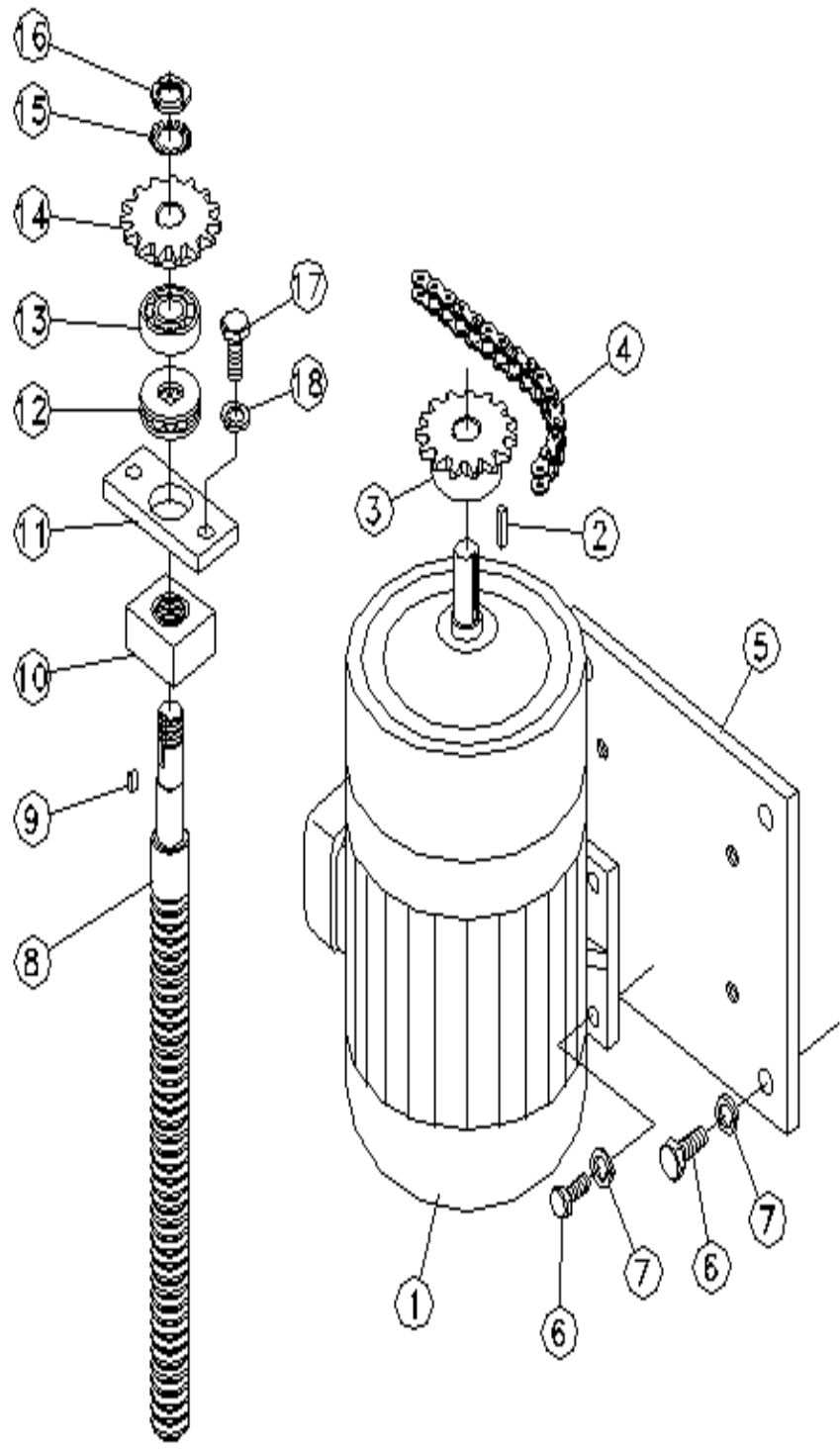


Image 11-A	Description or Name	AE Part No.	Qty		Remark
1	Reducer Motor	11091-11-001 A	1		
2	Key 7*7*25	KR-7*7*25	1		
3	Chain gear	11091-11-016	1		
4	Chain	BL-04-008	1		
6	Bolt 5/16*1	S-5/16*1	8		
7	Spring Washer 5/16	SW-5/16	8		
8	Lifting Screw	11091-11-007	1		
9	Key 5*5*13	KRR-5*5*13	1		
10	Lifting Nut	11091-11-008	1		
11	Retainer	11091-11-009	1		
12	Ball Bearing #2903	BR-2903	1		
13	Ball Bearing #6203Z	BR-6203Z	1		
14	Chain gear	11091-11-017	4		
15	Lock Washer Ø17	M17	1		
16	Lock Nut M17	MN17	1		
17	Bolt 3/8*1	S-3/8*1	2		
18	Spring Washer 3/8	SW-3/8	2		

Image 12

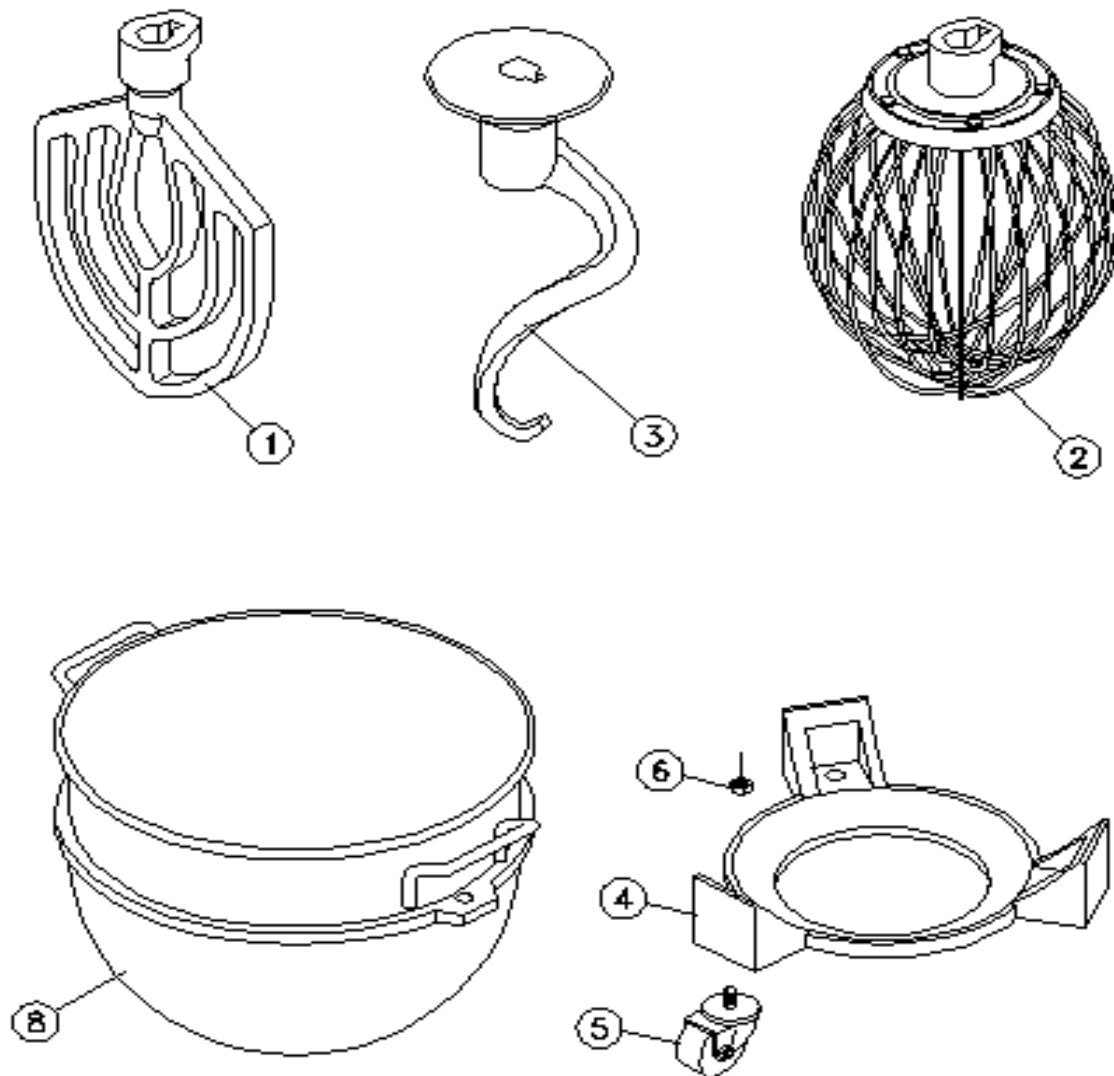


Image 12	Description or Name	HL Part No.	Qty		Remark
1	AL Flat Beater	11091-12-001	1		
2	AL Wire Whip	11091-12-002	1		
3	AL Dough Hook	11091-12-003	1		
4	Trolley Base	11091-12-011	1		
5	Wheel	WHEEL-001	3		
6	Nut 1/2"*12NC	NUT-1/2*12N C	3		
8	SS Bowl	11091-12-008	1		

Image 13

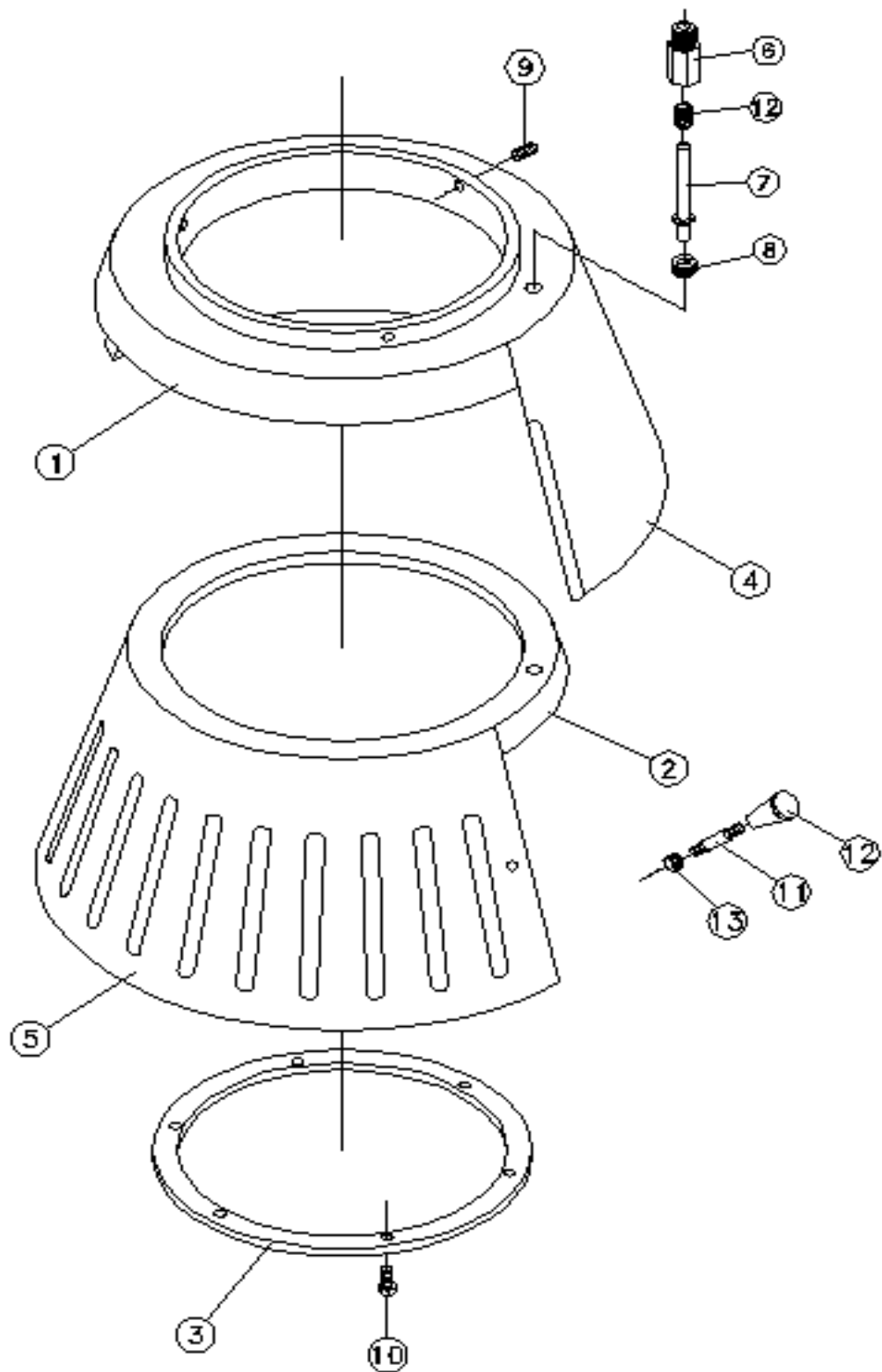


Image 13	Description or Name	HL Part No.	Qty		Remark
1	Head Ring	11091-13-001 A	1		
2	Moving Ring	11091-13-002 A	1		
3	Fixed Ring	11091-13-003 A	1		
4	Fixed Sheet	11091-13-004 A	1		
5	Moving Sheet	11091-13-005 A	1		
6	Control Shaft Seat	1109P-13-006	1		
7	Control Shaf	11091-13-007	1		
8	Screw	1109P-13-008	1		
9	Set Screw 5/16"*3/8"	S-S5/16*3/8	3		
10	Bolt 3/16"*1/2"	S-3/16*1/2	6		
11	Handle	11012-07-002	1		
12	Handle Knob	11012-07-001	1		
13	Nut 5/16*18NC	5/16*18NC	1		
14	Compression Spring	11091-13-012	1		