



# **BakeMax BMPM007 7 Quart Planetary Mixer Parts Breakdown**



**Questions? OEM Parts, Contact Us:**

**Toll Free: 1-800-565-2253**

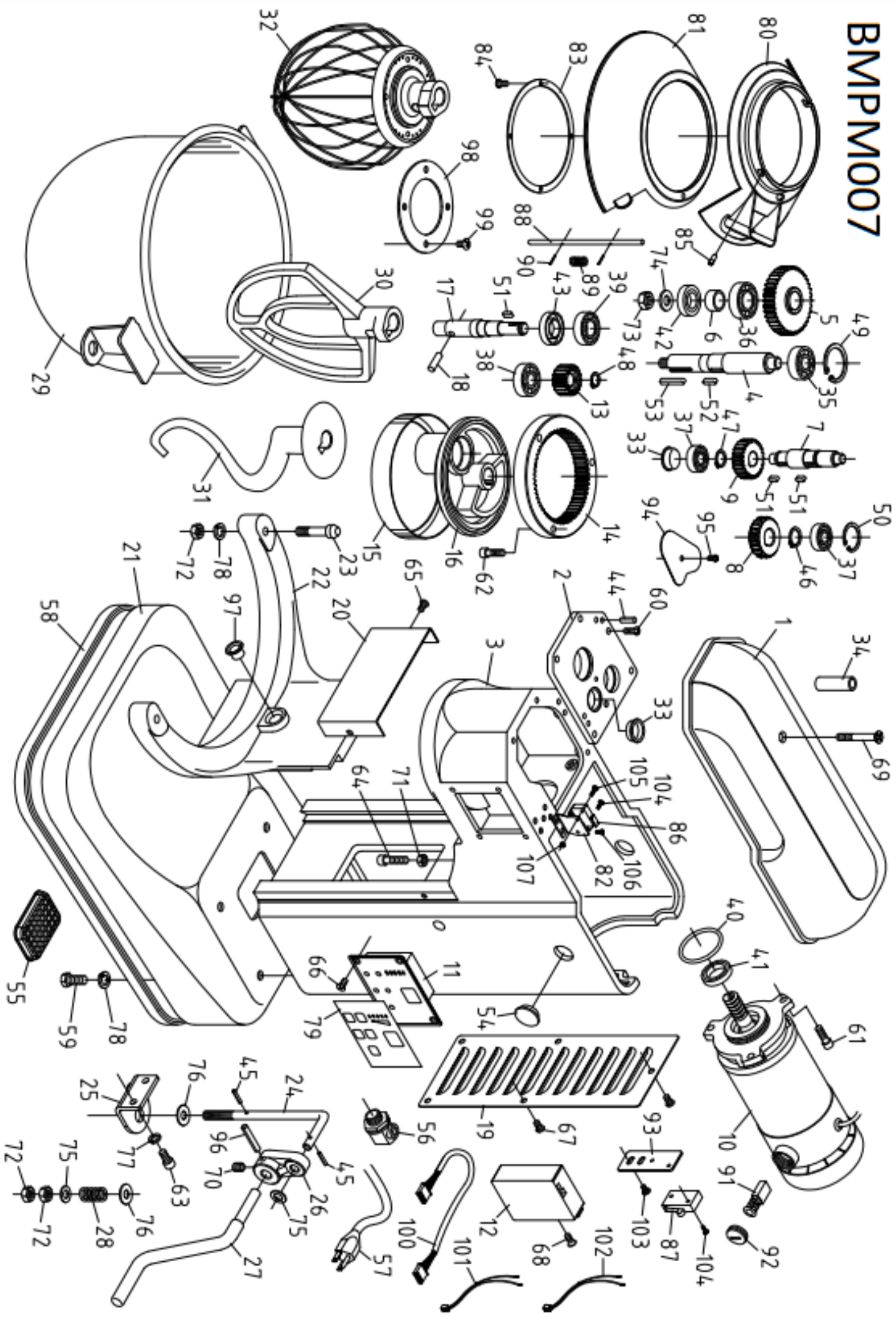
**Email: [Info@BakeMax.com](mailto:Info@BakeMax.com)**

**[www.BakeMax.com](http://www.BakeMax.com)**

***Warranty Registration***

**[www.BakeMax.com/Warranty-Registration](http://www.BakeMax.com/Warranty-Registration)**

# BMPM007



# BakeMax BMPM007 Parts List

#	Part #	Description	Qty	#	Part #	Description	Qty
1	11007-01-001	Top cover	1	55	11007-09-007	Plastic plug	1
2	11007-01-004	Gear Housing Cover	1	57	CABLE-16-3C-CE	Cable	1
3	11007-01-005	Column	1	59	S-5/16*3/4	Bolt	4
4	11007-02-001	Center Shaft	1	60	S+R3/16*1/2	Screw	5
5	11007-02-003/A/B	Gear-center Shaft	1	61	S-C-1/4*5/8	Mach Screw	3
6	11007-02-010	Spacer	1	62	S-C-1/4*5/8	Mach Screw	3
7	11007-04-001	Worm Gear Shaft	1	63	S-C-1/4*1/2	Mach Screw	2
8	GM07-04-002	Worm Gear	1	64	S-1/4*1	Bolt	1
9	11007-04-003/A/B	Gear-Worm gear shaft	1	65	S+R3/16*1/4	Screw	2
10	11007-05-001	Motor	1	66	S+F1/8*3/8	Screw	4
11	11007-07-001	Contraol Panle	1	67	S+R3/16*1/4	Screw	5
12	XL615	IC bord	1	68	S+F3/16*1/4	Screw	2
13	11007-08-001	Internal Pinion (18T)	1	69	S+F3/16*2	Flat Screw	1
14	11007-08-002A	Internal Drive Gear (60T)	1	70	S-S5/16*3/8	Screw	1
15	11007-08-003	Head ring	1	71	NUT-1/4*20NC	Nut	1
16	11007-08-004	Planetary Head	1	72	NUT-5/16*18NC	Nut	4
17	11007-08-005	Planetary Shaft	1	73	NUT-3/8*16NC	Nut	1
18	11007-08-007	Tapered Pin	1	74	WB-3/8	Flat washer	1
19	11007-09-002	Rear plate	1	75	WB-5/16	Flat washer	2
20	11007-09-003	Front Cover	1	76	WB-5/16	Flat washer	2
21	11007-09-004	Base	1	77	SW-1/4	Spring Washer	2
22	11007-10-001	Bowl Support	1	78	SW-5/16	Spring Washer	6
23	11007-10-002	Bowl Pin	2	79	11007-07-001	Sticker of panel	1
24	11007-11-001	Lifting Bar	1	80	11007-13-001B	Safety guard fixed sheet	1
25	11007-11-002	Fixed Angel plate	1	81	11007-13-002B	safety guard active sheet	1
26	11007-11-003	Lifting handle bracket	1	82	11007-13-008	Seat of Limit switch	1
27	11007-11-004	Lifting Handle	1	83	11007-13-005	Fixed ring	1
28	BM10-11-005	Spring	1	84	S+R1/8*3/8	Screw	4
29	11007-12-001	Bowl	1	85	11007-13-006C	Bolt	2
30	11007-12-002	Beater	1	86	V-15-1A5	Limit switch of guard	1
31	11007-12-003	Hook	1	87	V-155-1A5	Limit switch of lifting	1
32	11007-12-004	Whip	1	88	GM07-01-010	Switch trigger pin	1
33	11012-04-008	Oil baffle	2	89	GM07-01-011	Spring	1
34	11007-01-002	Supporting tube	1	90	SPP-2*10	Spring Pin	2
35	BR-6201Z	Bearing	1	91	11007-05-002	Carbon brush	2
36	BR-6003Z	Bearing	1	92	11007-05-003	Carbon cover	2
37	BR-6000Z	Bearing	2	93	11007-11-006	Switch seat	1
38	BR-6201Z	Bearing	1	94	11007-01-006	oil Baffle	1
39	BR-6002Z	Bearing	1	95	S+R3/16*1/4	Screw	2
40	OR-G40	Oil Seal	1	96	SPP-4*30	Spring pin	1
41	OS-TC15*30*07	Oil Seal	1	97	11007-10-007	Hole Cover	1
42	OS-TC20*30*07	Oil Seal	1	100	XL612-L1	Wire for panel	1
43	OS-TC17*32*07	Oil Seal	1	101	XL612-L7	Wire for safety guard	1
44	SPP-5*16	Spring pin	2	102	XL612-L8	Wire for lifting	1
45	SPP-3*18	Spring pin	2	103	S+R3/16*3/8	Screw	2
46	CR-S16	C-Snap	1	104	S+R1/8*1/2	Screw	3
47	CR-S14	C-Snap	1	105	S+R1/8*5/8	Screw	1
48	CR-S12	C-Snap	1	106	S+R1/8*3/8	Screw	2
49	CR-S32	C-Snap	1	107	NUT-1/8*40NC	Nut	1
50	CR-S26	C-Snap	1				
51	KRR-4*4*10	Key	3				
52	KRR-4*4*15	Key	1				
53	KR-4*4*28	Key	1				



# Warranty & Service

---

One year parts and labor limited warranty on most items, there are select items which carry a two year warranty. Extended warranty is available on some products. Contact us for details.

For all warranty claims, proof of purchase is required.

Warranty begins 10 days after shipping from warehouse; delays in installation which would extend the warranty must be approved.

All equipment must be installed and connected by qualified professionals in accordance with the manual specification.

Any abuse of equipment or improper use of machinery will void the warranty. Including failure to follow all instructions in operations manual. Properly install, maintain equipment, follow capacity charts, or electrical information.

Accessories, attachments, or electrical components such as fuses, bulbs, elements and switches are covered under a 90 day warranty. Repairs include Parts and Labor only, excluded is the following:

1. Overtime Labor Rates
2. Expedited Freight for Parts
3. BakeMax assumes no responsibility for down time or loss of product. All defective parts must be returned to BakeMax for credit. Repairs must be pre-authorized by BakeMax prior to work commencing.
4. Travel time is not covered by BakeMax, unless pre-authorized by BakeMax.

## Bench Warranty (Machines Weighing 100 lb or less)

For all warranty claims proof of purchase is required to claim warranty. One year parts and labor warranty, from date of purchase.

Once machine is approved for warranty, the machine is to be shipped prepaid to authorized service depot. Customer will ship machine prepaid to authorized service depot. If machine requires warranty work in less than 30 days of purchasing BakeMax will pay all shipping charges. (Freight damages during shipping for warranty is the responsibility of the owner of the machine.)

Once machine is received and repaired it will be returned to the user at BakeMax expense.

***\*\*BakeMax machines sold outside of the continental North America will carry one year parts warranty only.***



Titan Ventures International (TVI)  
270 Baig Blvd, Suite A3, Moncton, NB E1E1C8  
Toll Free: 1-800-565-BAKE (2253)  
Telephone: 1-506-858-8990  
Fax: 1-506-859-6929  
Email: Info@BakeMax.com

*BakeMax is a Registered Trade Mark of Titan Ventures International Inc.*

---

## BakeMax® / Titan Ventures International Inc.

### Warehouses:

270 Baig Blvd, Suite A3, Moncton, NB E1E1C8   
1605 Crescent Circle, Dallas, TX 75006 

**Toll Free:** 1-800-565-BAKE (2253)

**Phone:** 506-858-8990

**Fax:** 506- 859-6929

**Email:** Sales@BakeMax.com