



America

www.BakeMax.com

Project: \_\_\_\_\_

Item: \_\_\_\_\_

Qty: \_\_\_\_\_ Date: \_\_\_\_\_

## BakeMax America BAFA Series Gas Hot Plate



Model BAFA4M-24



The BakeMax America BAFA Series Gas Hot Plate is designed to provide the ultimate in performance and durability. As with all our heavy-duty countertop equipment, they are built to the highest commercial standards to ensure years of trouble-free service, featuring superior frame construction and stainless-steel exterior for easy maintenance. Combine all of this and our affordable prices and you have the best value for your budget.

### Features:

- Available in 12", 24", 36", 48" and 60".
- Constructed of Stainless-Steel for Durability & Ease of Cleaning
- Compact Design for Countertop
- 12" x 12" Heavy-Duty Cast Iron Top Grates designed for easy movement of pots across top sections.
- 25,00 BTU Heavy-Duty Cast Iron Top Burners
- The Large 7" Flame Spread offers a more efficient burn pattern for Small & Large Pots
- Double burners made of cast iron for peak performance
- Independent manual controls for each burner
- 4" highly polished chrome adjustable steel legs.
- Full width catch tray funneling into a removable pan for easy cleaning
- 3/4" Rear Gas Connect
- LP Conversion Kit Included
- Gas Appliance Regulator Included
- 2-Year Limited Warranty



Cast Iron Grate





Cast Iron Burner

\*\* Due to continuous product improvement, specifications are subject to change without notice.

**BakeMax® / Titan Ventures International Inc.**

#### Warehouses:

270 Baig Blvd, Suite A3, Moncton, NB E1E1C8   
1605 Crescent Cr Carrollton, TX, Dallas, TX 75006 

**Toll Free:** 1-800-565-BAKE (2253)

**Phone:** 506-858-8990

**Fax:** 506- 859-6929

**Email:** Sales@BakeMax.com

### BakeMax America BAFA Series Gas Hot Plate

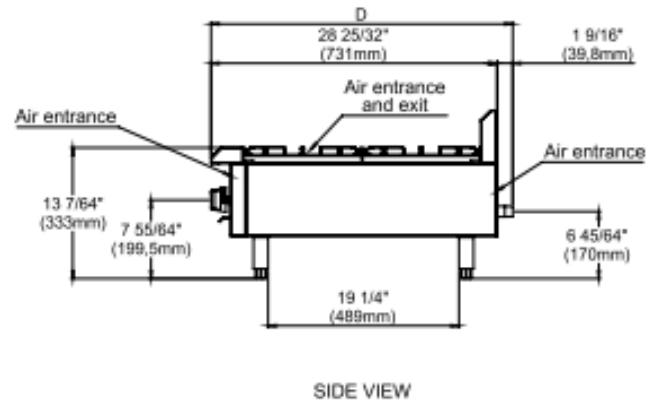
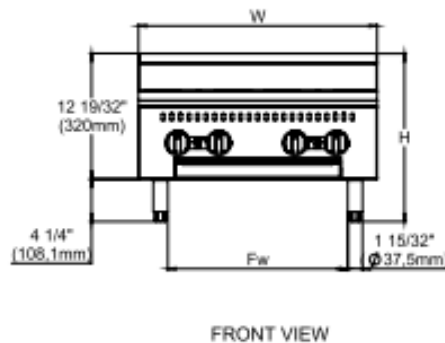
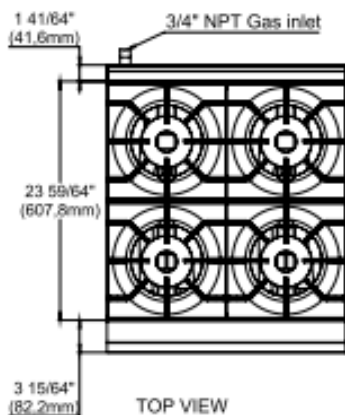
#### Technical Specifications & Drawings

Model	Width (B)	Depth (C)	Height (A)	Burners	BTU NG	BTU LP
BAFA2M-12	12"	30"	17"	2	50,000	50,000
BAFA4M-24	24"	30"	17"	4	100,000	100,000
BAFA6M-36	36"	30"	17"	6	150,000	150,000
BAFA8M-48	48"	30"	17"	8	200,000	200,000
BAFA0M-60	60"	30"	17"	10	250,000	250,000

**\*Warning:** The minimum supply pressure on this appliance must be set at 4 water column inches for natural gas and 10 water columns for propane gas. Each unit has a 3/4" gas connect at the rear of the appliance.



#### Shipping Information

Model	Net Weight Lbs./kg	Crated Weight Lbs./kg	Crate Dimensions (D x W x H)
BAFA2M-12	73lbs/33kg	99lbs/45kg	34"x17"x20"
BAFA4M-24	95lbs/43kg	121lbs/55kg	34"x28"x20"
BAFA6M-36	115lbs/52kg	141lbs/64kg	34"x41"x20"
BAFA8M-48	238lbs/108kg	298lbs/135kg	34"x53"x20"
BAFA0M-60	300lbs/136kg	353lbs/160kg	34"x64"x20"



BakeMax<sup>®</sup> / Titan Ventures International Inc.

**Warehouses:**

270 Baig Blvd, Suite A3, Moncton, NB E1E1C8   
 1605 Crescent Cr Carrollton, TX, Dallas, TX 75006 

**Toll Free:** 1-800-565-BAKE (2253)

**Phone:** 506-858-8990

**Fax:** 506- 859-6929

**Email:** Sales@BakeMax.com