



www.BakeMax.com

Project: _____

Item: _____

Qty: _____ Date: _____

BakeMax BMDN1722R Electric Shawarma Machine

Achieve authentic results with precision grilling and slicing with a BakeMax Shawarma Machine. Designed for Mediterranean restaurants, kebab establishments, and mobile food vendors, our robust and customizable equipment ensures efficient preparation of tender, flavorful shawarma and doner kebabs. Deliver exceptional quality that consistently satisfies your customers.



Features:

- Constructed of Heavy Duty Stainless-Steel
- Hygienic, Safe to use & Easy-to-Clean
- Ensures precise heat distribution for perfect gyros, doner kebab, shawarma, and al pastor.
- 130lbs. Meat Capacity
- Spit Length is 33.5" / 853mm
- Two Individually Controlled Fast-Heating Elements providing a total of 6000W of Power
- Large base provides a strong and reliable support
- Adjustable, Dual Directional Spit
- Sliding bottom housing allows you to move the shawarma meat closer to the element.
- Large Easy-to-Remove Grease / Oil Drip Container for Easy Clean-Up
- Field Convertible to Single Phase
- 2-Year Limited Warranty

Product Specifications:

- Product Dimensions (WDH): 20" x 24" x 46"
- Product Weight: 83 lbs.

Shipping Specifications:

- Crated Dimensions (WDH): 22" x 26" x 48"
- Crated Weight: 97 lbs.

Electrical Specifications:

- 208V / 25A / 6000W / 60Hz / 3Ph / Hard Wired
- 208V / 29A / 6000W / 60Hz / 1Ph / Hard Wired



Intertek

Intertek

Electrical Specifications:

- 208V / 25A / 6000W / 60Hz / 3Ph / Hard Wired
- 208V / 29A / 6000W / 60Hz / 1Ph / Hard Wired

*Due to continuous product improvement, specifications are subject to change without notice.

BakeMax ® / Titan Ventures International Inc.

Warehouses:

20 Caribou St, Moncton, NB E1H 0P3
5705 Valley Belt Rd Independence, OH 44131
1201 E 27th Terrace Pittsburg, KS 66762

Toll Free: 1-800-565-BAKE (2253)
Phone: 506-858-8990
Fax: 506- 859-6929
Email: Sales@BakeMax.com



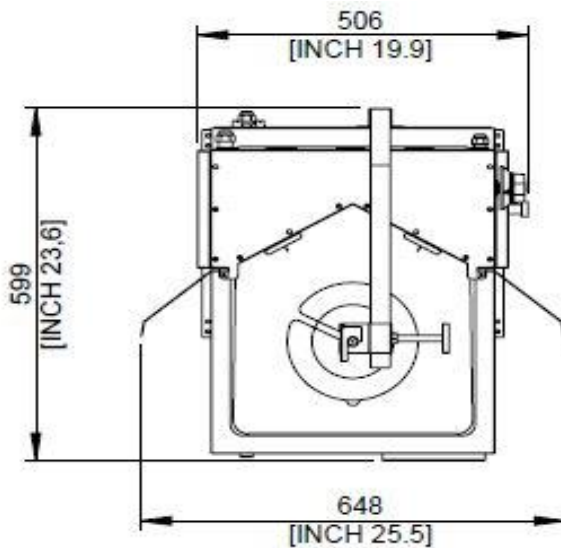
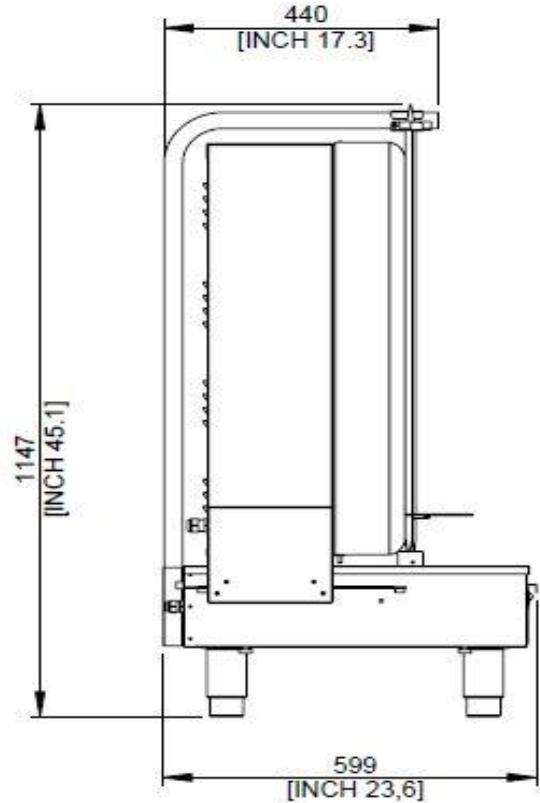
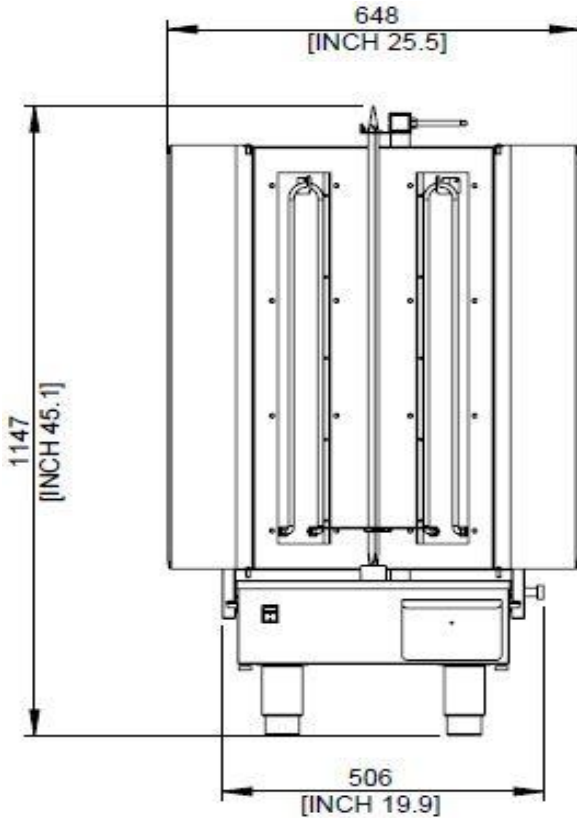
www.BakeMax.com

Project: _____

Item: _____

Qty: _____ Date: _____

BakeMax BMDN1722R Electric Shawarma Machine






REQUIRED CLEARANCES

	NON-COMBUSTIBLE	COMBUSTIBLE
LEFT	0"	12"
RIGHT	0"	12"
BACK	0"	3"

BakeMax® / Titan Ventures International Inc.

Warehouses:

20 Caribou St, Moncton, NB E1H 0P3 
 5705 Valley Belt Rd Independence, OH 44131 
 1201 E 27th Terrace Pittsburg, KS 66762 

Toll Free: 1-800-565-BAKE (2253)
Phone: 506-858-8990
Fax: 506- 859-6929
Email: Sales@BakeMax.com