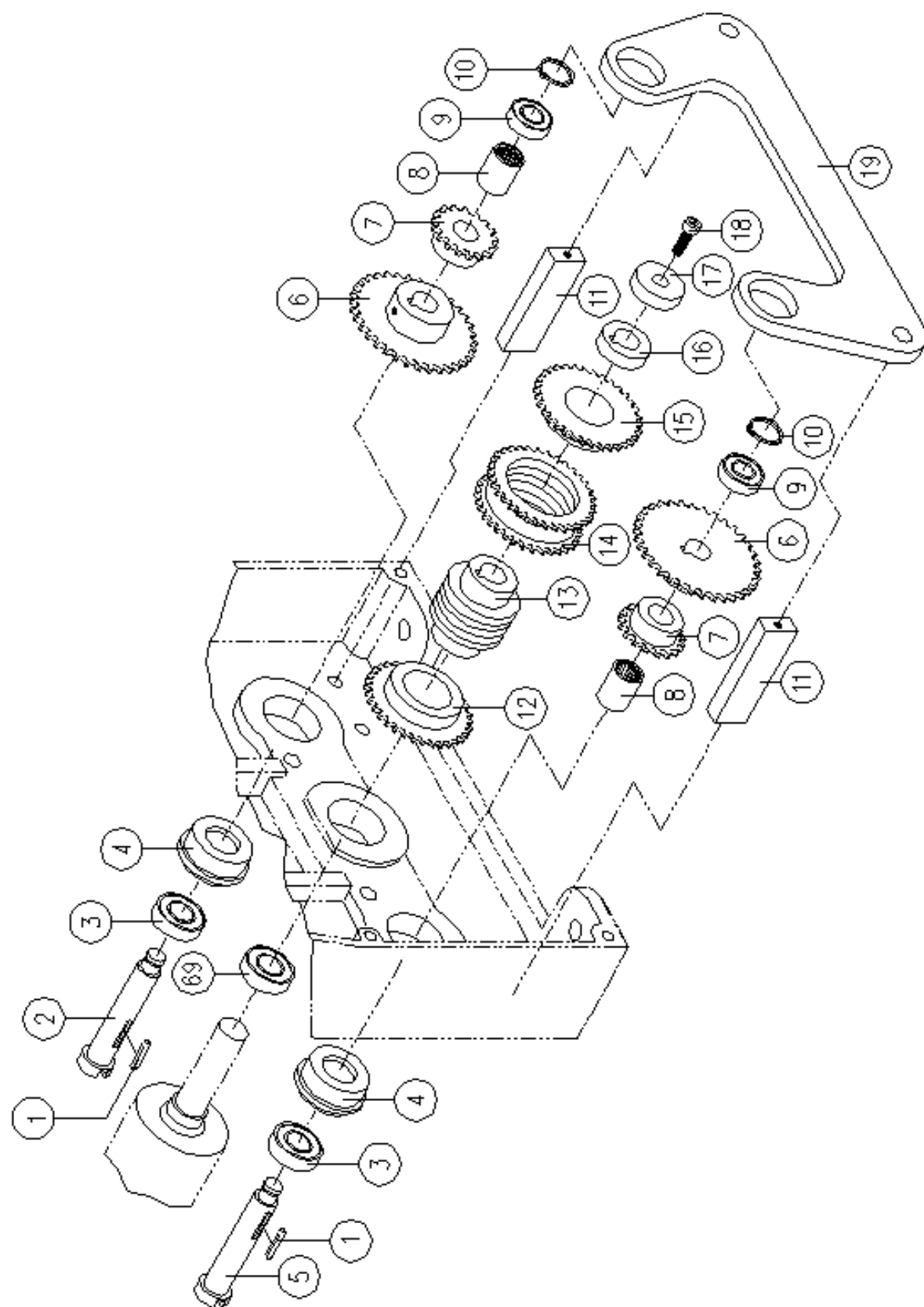


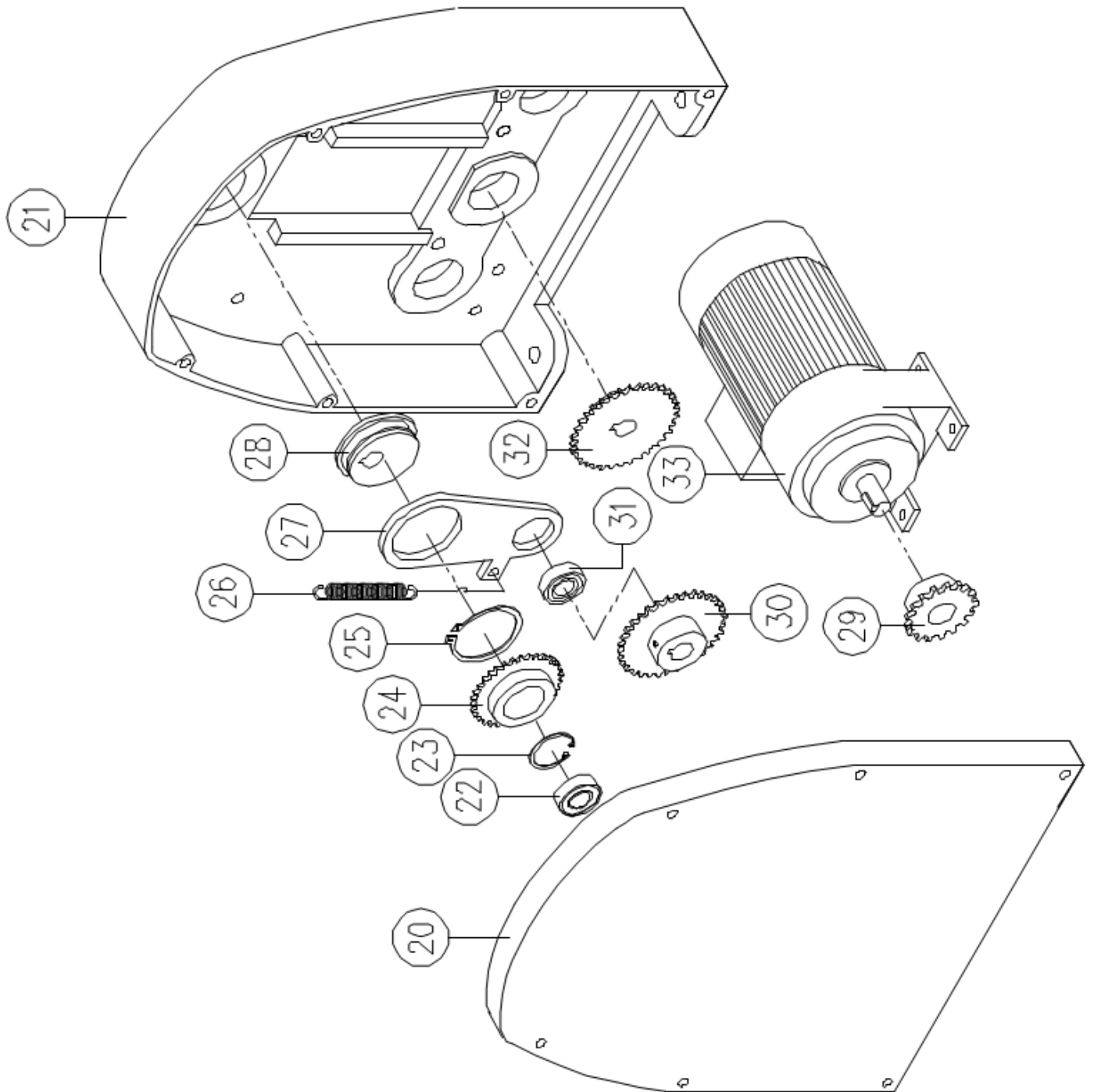
BMFRS01, BMFRS02, BMFRS03 Parts Breakdown & List

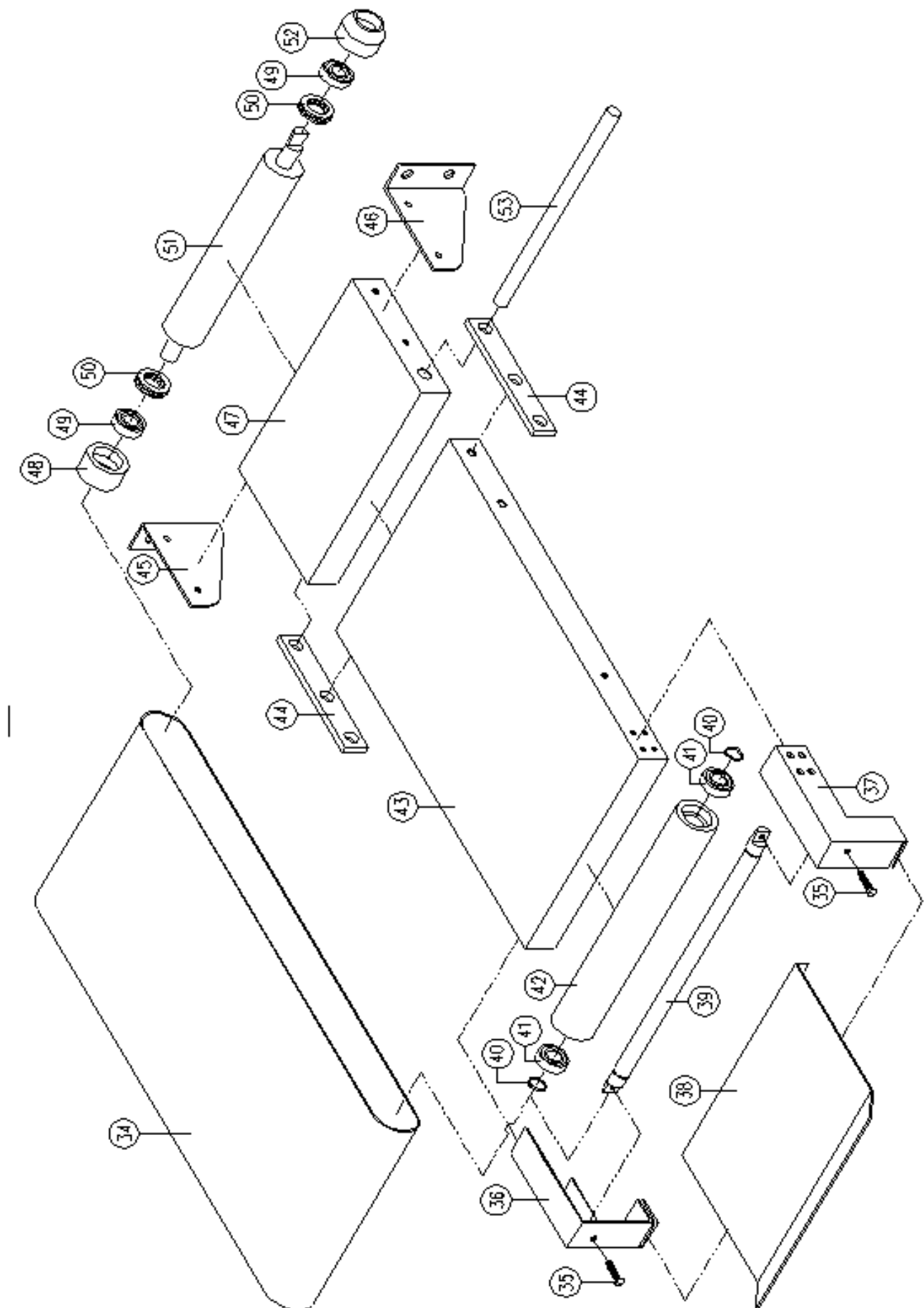
BakeMax Part #	Part Description	BakeMax Part #	Part Description
1 - CRS01/06/001	Key	2 - CRS01/06/002	Right Drive Shaft
3 - CRS01/06/003	Bearing 6004ZZ	4 - CRS01/06/004	Bearing Block
5 - CRS01/06/005	Left Drive Shaft	6 - CRS01/06/006	Sprocket 26T
7 - CRS01/06/007	Sprocket 15T	8 - CRS01/06/008	Locking Bearing FC-20
9 - CRS01/06/009	Bearing 6002ZZ	10 - CRS01/06/010	C. Retainer Ring S-15
11 - CRS01/06/011	Stay	12 - CRS01/06/012	Sprocket 23T
13 - CRS01/06/013	Worm Spline	14 - CRS01/06/014	Double Worm Gear 24T
15 - CRS01/06/015	Sprocket 23T	16 - CRS01/06/016	Spacer
17 - CRS01/06/017	Washer	18 - CRS01/06/018	Bolt
19 - CRS01/06/019	Support bracket	20 - CRS01/06/020	Rear Panel
21 - CRS01/06/021	Rear Frame	22 - CRS01/06/022	Bearing 6205ZZ
23 - CRS01/06/023	C. Retainer ring R-52	24 - CRS01/06/024	Up Roller Sprocket
25 - CRS01/06/025	C. Retainer ring S-70	26 - CRS01/06/026	Up Roller Tension Spring
27 - CRS01/06/027	Connecting Board	28 - CRS01/06/028	Up Roller Cam
29 - CRS01/06/029	Motor Sprocket	30 - CRS01/06/030	Sprocket
31 - CRS01/06/022	Bearing 6205ZZ	32 - CRS01/06/032	Sprocket
33 - FRS01/06/033 BD036/GOV BD036/GOVS FRS01/CAP/STA FRS01/CAP/RUN	Motor 220V 60Hz 1Ph Centrifugal Governor Centrifugal Switch Start Capacitor Run Capacitor	34 – FRS01/02/034A FRS01/02/034B FRS02/02/034A FRS02/02/034B FRS03/02/034A FRS03/02/034B	Conveyor Belt (Flat) Conveyor Belt (Ridges) Conveyor Belt (Flat) Conveyor Belt (Ridges) Conveyor Belt (Flat) Conveyor Belt (Ridges)
CRS01/06/035	Tension Screw	CRS01/06/036	Left Support Bracket
CRS01/06/037	Right Support Bracket	CRS01/06/038	Extension Catch Tray

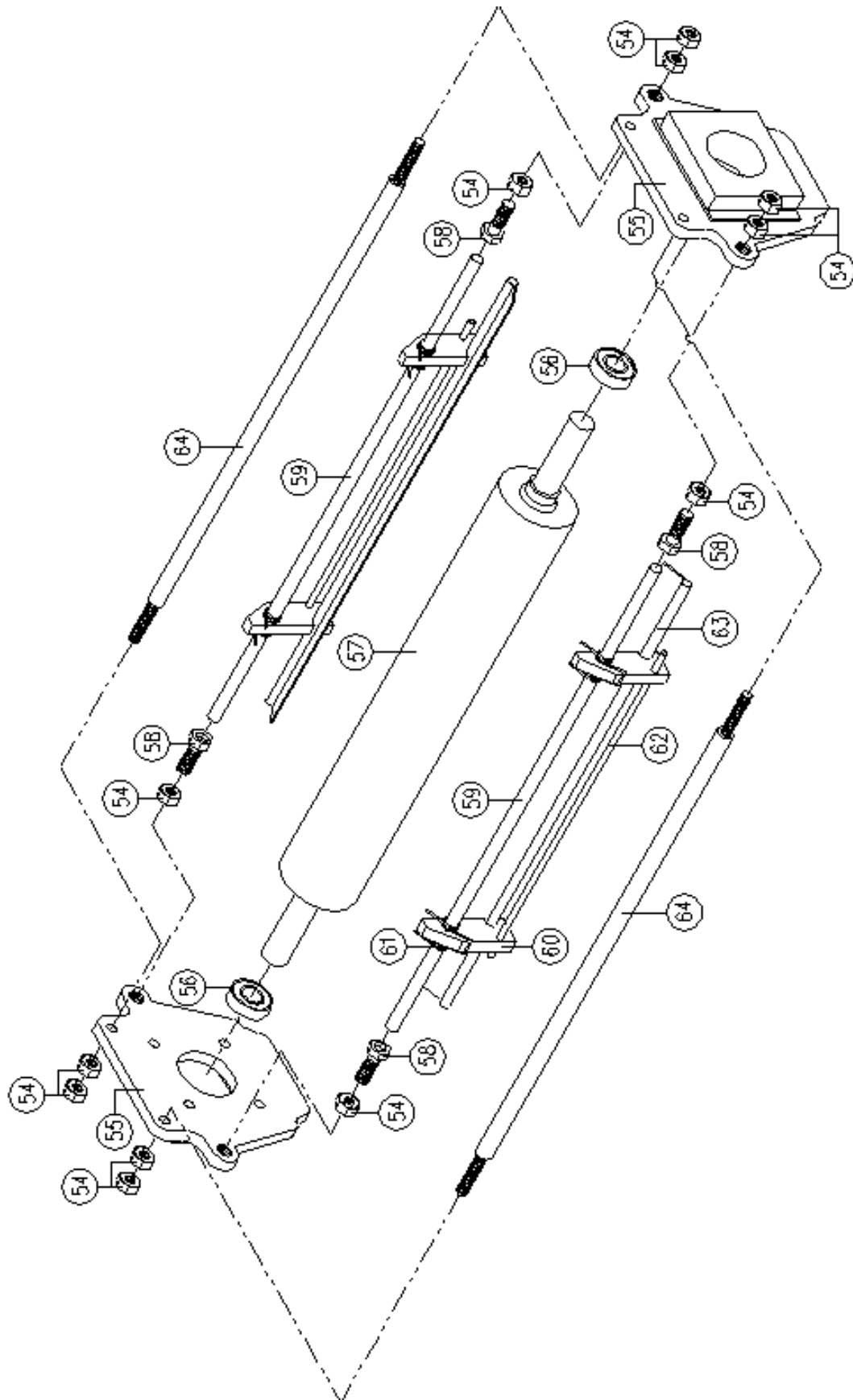
BakeMax Part #	Part Description	BakeMax Part #	Part Description
39 – CRS01/06/039	End Roller Complete FRS01	40 – CRS01/06/040	C. Retainer Ring S-20
39 – CRS02/06/039	End Roller Complete FRS02		
39 – FRS03/06/039	End Roller Complete FRS03		
41 – CRS01/06/041	Bearing 6004ZZ	42 – See #39	Roller Shaft - N/A
43 – CRS01/06/043	Outfeed Table	44 – CRS01/06/044	Connecting Rod
45 – CRS01/06/045	Left Support Bracket	46 – CRS01/06/046	Right Support Bracket
47 – CRS01/06/047	Base	48 – CRS01/06/048	Bearing Block
49 – CRS01/06/049	Bearing 6003ZZ	50 – CRS01/06/050	Thrust Bearing 51203
51 – CRS01/06/051	Belt Drive Roller BMFRS01	52 – CRS01/06/052A	Bearing Block (Flat Belt)
51 – CRS02/06/051	Belt Drive Roller BMFR02	52 – CRS01/06/052B	Bearing Block (Ridge Belt)
51 – FRS03/06/051	Belt Drive Roller BMFRS03		
55 – CRS01/06/055	Sliding Seat	56 – CRS01/06/022	Bearing 6205ZZ
57 – CRS01/06/057	Up roller	58 – CRS01/06/058	Bolt
61 – CRS01/06/061	Torsion Spring (“V” Scraper)	62 – CRS01/06/062	Double Scraper Bar
63 – CRS01/06/063	Upper Double “V” Scraper	64 – CRS01/06/064	Double Scraper Bar
63 – CRS02/06/063	Upper Double “V” Scraper	64 – CRS02/06/064	Double Scraper Bar
65 – CRS01/06/065	Front Frame	66 – CRS01/06/066	Roller Head Housing
67 – N/A	Stop Pin – N/A – Welded *Use Long Bolt/Screw	68 – CRS01/06/068	Safety Guard FRS01
		68 – CRS02/06/068	Safety Guard FRS02
69 – CRS01/06/022	Bearing 6205ZZ	70 – CRS01/06/070	Down Roller
71 – CRS01/06/071	Lower Scraper FRS01	72 – CRS01/06/072	Bolt Support FRS01
71 – CRS02/06/071	Lower Scraper FRS02	72 – CRS02/06/072	Bolt Support FRS02
73 – CRS01/06/073	Anchor Block	74 – CRS01/06/074	Drive Roller Bolt
75 – CRS01/06/075	Expansion Spring Lower Scraper	76 – CRS01/06/076	Scraper Ring

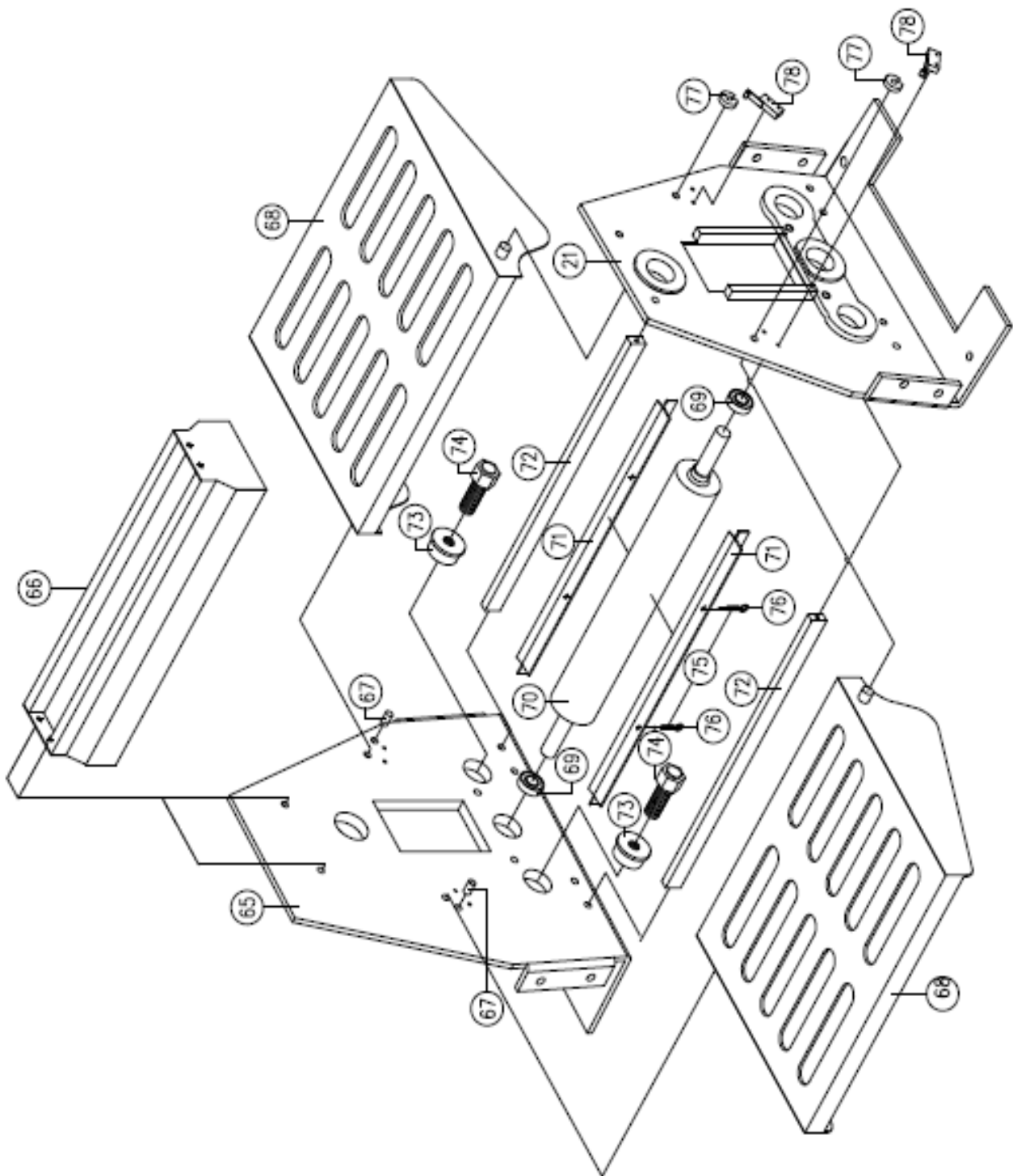
BakeMax Part #	Part Description	BakeMax Part #	Part Description
77 – CRS01/06/077L CRS01/06/077R	Microswitch Trigger Left Microswitch Trigger Right	CRS01/06/078	Microswitch (Orange Button)
79 – CRS01/06/079	Bolt	80 – CRS01/06/080	Lock Washer
81 – CRS01/06/081	Washer	82 – CRS01/06/077	Trigger – See # 77
83 – CRS01/06/083	Directional Lever Microswitch (Lever Type)	84 – CRS01/06/084	Bolt
85 – CRS01/06/085	Compression Spring	86 – CRS01/06/086	Ball
87 – CRS01/06/087	Fixed Support	88 – CRS01/06/088	Locating Mass
89 – CRS01/06/089	Movement Control Lever	90 – CRS01/06/090 90 – CRS02/06/090	Thickness Handle Shaft FRS01 Thickness Handle Shaft FRS02
91 – CRS01/06/091	C. Retainer ring S-25	92 – CRS01/06/092	Connecting Board
93 – CRS01/06/093	Graduated Scale	94 – CRS01/06/094	Arrow
95 – CRS01/06/095	Handle Base	96 – CRS01/06/096	Front Panel
97 – CRS01/06/097	Teflon Spacer	98 – CRS01/06/098	Thickness Adjustment Handle
98 – CRS01/06/098A	Handle O-Ring	101 – CRS01/06/101	Bolt Cover
102 – CRS01/06/102	Trigger Pin	103 – CRS01/06/103	Compression Spring
104 – CRS01/06/104	Trigger Locking Lever	105 – CRS01/06/105	Knob
106 – CRS01/06/106	Rail Rest	107 – CRS01/06/107	Bolt
109 – CRS01/06/109	Internal Half of Handle	110 – CRS01/06/110	External Half of Handle
111 – CRS01/06/111	Cap Screw M6	112 – CRS01/06/112	Handle Locking Assembly
113 – CRS01/06/113	Locating Mass	012 - FRS01/01/012	Foot Pedal Assembly
FRS01/BUSH	Support Arm Bushing		

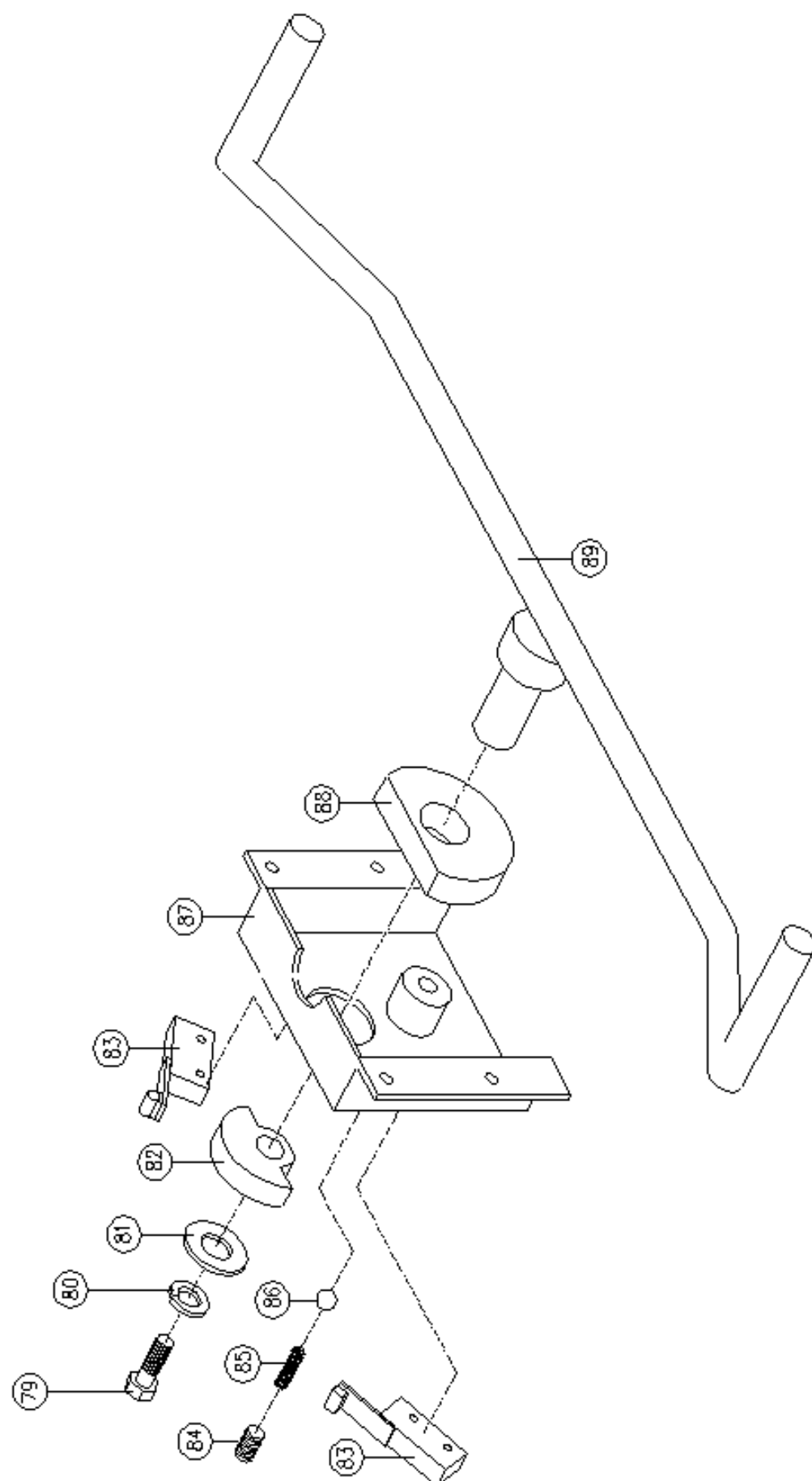


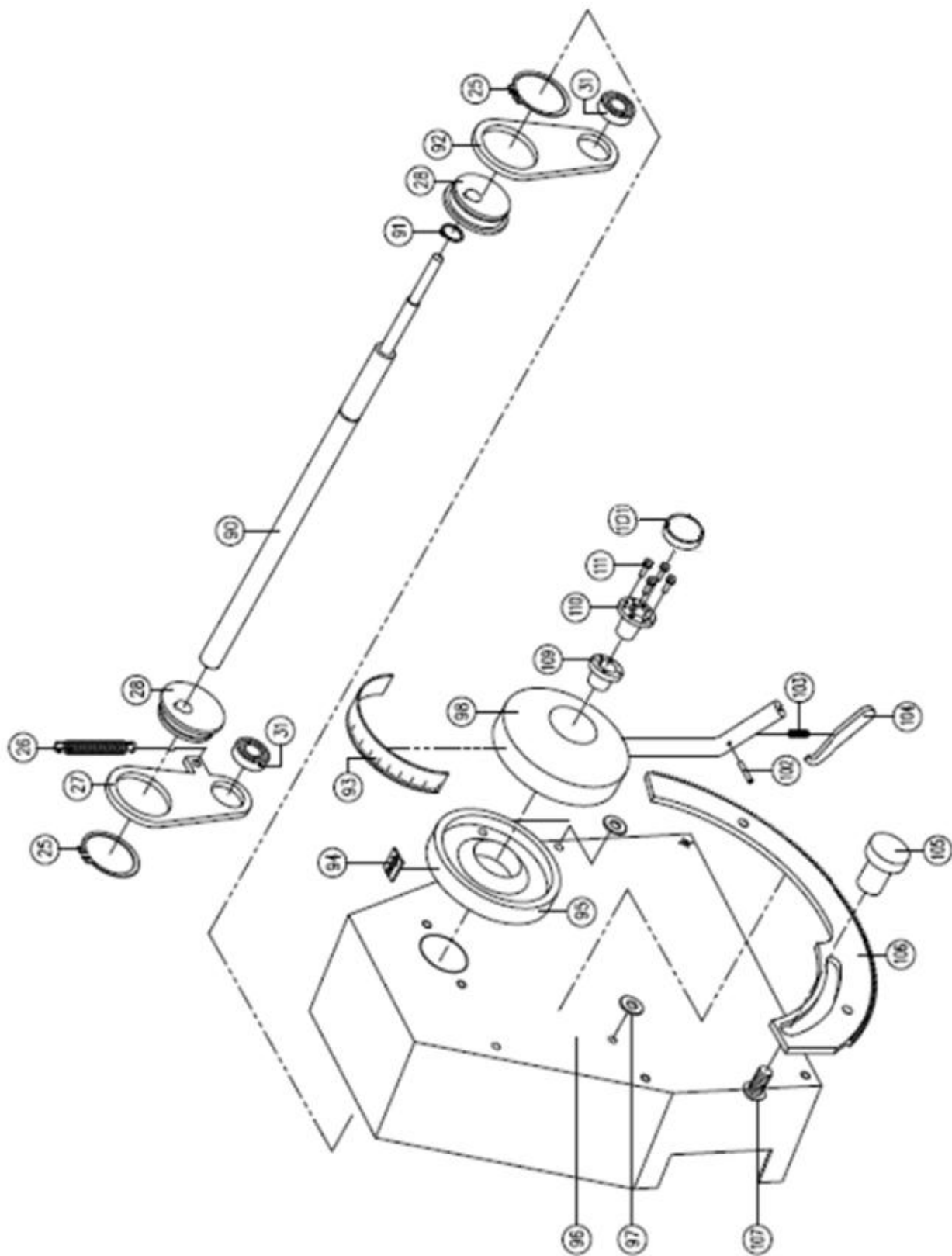












BakeMax Warranty Policy

BakeMax provides a 1-Year Limited Parts and Labor warranty on most items, there are select items which carry a Limited 2-Year Warranty. Extended Warranty is available on some products. Please contact us for details. The Warranty is not transferable and is limited to original installation of equipment sold by BakeMax for the original user.

For all Warranty Claims, Proof of Purchase and/or Serial Number is required. Once the machine is approved, BakeMax will provide our customers with on-site Warranty Coverage on all equipment more than 100lbs. BakeMax assumes no responsibility for downtime or loss of product. Repairs must be Pre-Authorized by BakeMax and have a Service Authorization Number issued prior to commencing Warranty Service.

Warranty begins 10-Days after shipping from warehouse; delays in installation which would extend the Warranty must be Approved. All equipment must be installed and connected by Qualified Professionals in accordance with the Manual Specification. Products shipped are to be inspected at time of delivery, the receiver is responsible for inspection.

Any abuse or improper use of the equipment will void the warranty. This includes failure to follow all cleaning instructions, improper installation, improper maintenance, failure to follow capacity charts, and improperly wired electrical connections. The Warranty does not apply to abuse, willful or accidental damage, or to products used for other than their intended purpose. Wear parts such as Accessories, Attachments, or Electrical Components such as Fuses, Bulbs, Elements, and Switches carry a 90-Day Warranty only.

Bench Warranty (Machines Weighing 100 lb. or less)

Once the machine is Approved for Warranty Service, if the machine requires Warranty work in less than 30 days of purchase date, BakeMax will pay all shipping charges. Once the machine is received and repaired it will be returned to the user at BakeMax expense. Freight Damages during return shipping is the responsibility of the owner of the machine.

The following is not covered under the BakeMax Warranty:

1. Overtime Labor Rates are not covered by BakeMax.
2. All parts will be shipped via Ground Courier only; If Express Shipping is required, it will be the responsibility of the Customer or Dealer.
3. Travel for Warranty Service is covered up to 100 Miles /160 Km Roundtrip, any further mileage will be the responsibility of the Customer or Dealer.
4. There is no on-site Warranty Service for Residential Addresses or addresses outside of the contiguous United States (*Lower 48*) or Canada.

***BakeMax machines sold outside of the contiguous United States (Lower 48), or Canada will carry a 1-Year Parts Warranty only.*

Questions? OEM Parts, Contact Us:

Toll Free: 1-800-565-2253

Email: Service@BakeMax.com

www.BakeMax.com