



BMPM012

12 Quart Planetary Mixer

Parts Diagram



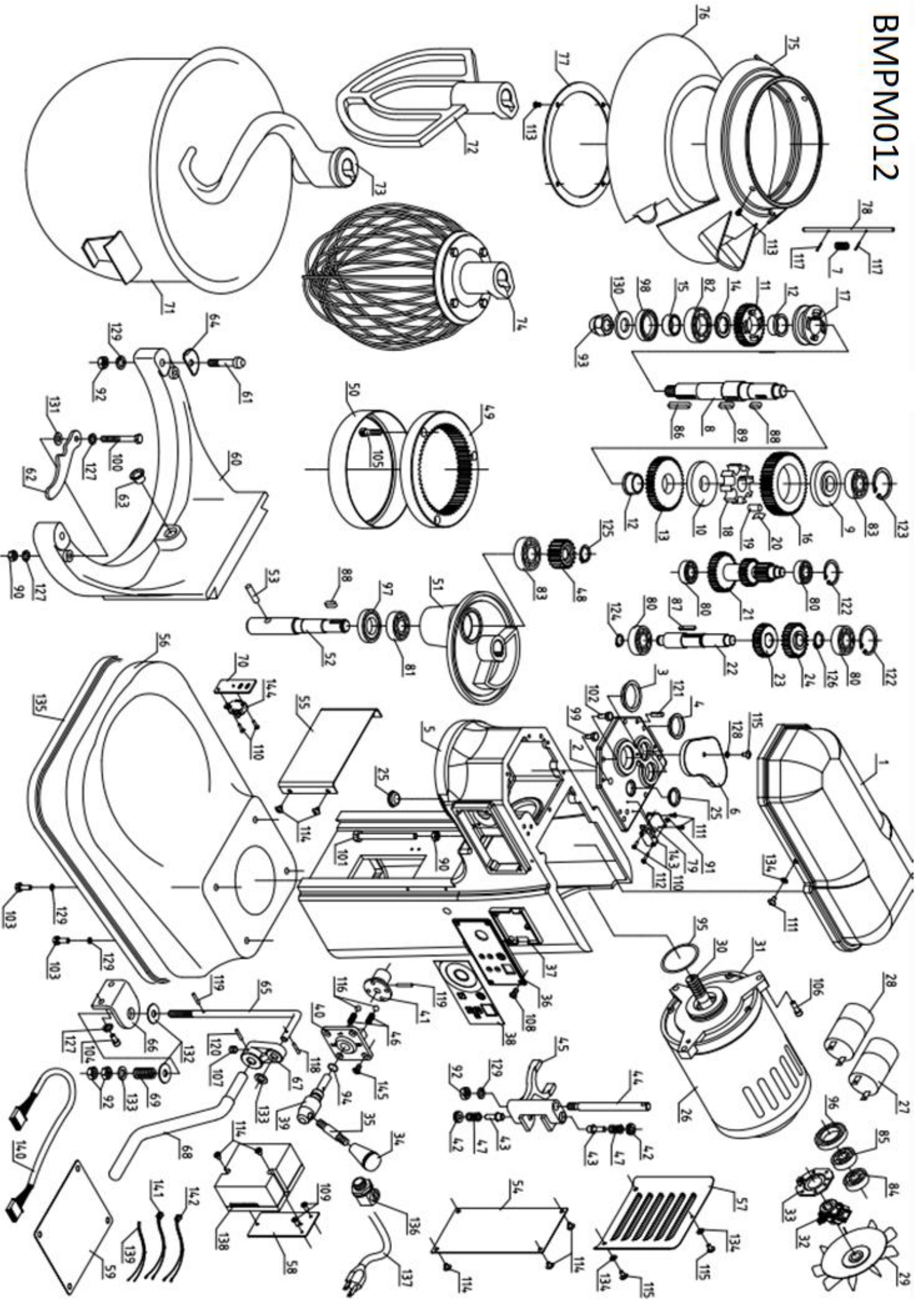
Questions? OEM Parts, Contact Us:

Toll Free: 1-800-565-2253

Email: Info@BakeMax.com

www.BakeMax.com

BMPM012



BMPM012 12 Qt Planetary Mixer Parts List

#	Part #	Description	Qty	#	Part #	Description	Qty	#	Part #	Description	Qty
1	GM12-01-001	Top cover	1	56	GM12-09-006	PCB	1	121	SPP-6*16	SPRING PIN	2
2	GM12-01-004	Gear Housing Cover	1	55	GM12-09-007	Base bottom plate	1	122	STW-R28	CSNAP	2
3	BM10-01-004A	Oil Baffle	1	60	GM12-10-001	Bowl support	1	123	STW-R35	CSNAP	2
4	BM10-01-004B	Oil Baffle	1	61	RM10-10-002	BOWL PIN	2	124	STW-S12	CSNAP	1
5	GM12-01-005	Column	1	62	11012-10-006	BOWL FIXED PLATE	2	125	STW-S15	CSNAP	1
6	GM12-01-006	Oil Plate	1	63	11007-10-007	HOLE COVER	1	126	STW-S16	CSNAP	1
7	GM07-01-011	Spring	1	64	GM12-10-007	BOWL SUPPORT PLATE	2	127	SW-1/4	SPRING WASHER	6
8	BM10-02-001	Main Shaft	1	65	BM10-11-001	Lifting bar	1	128	SW-3/16	SPRING WASHER	1
9	BM10-02-002	DETAIN-FIXED COVER	1	66	BM10-11-002	FIXED ANGLE BAR	1	129	SW-5/16	SPRING WASHER	7
10	BM10-02-002A	DETAIN-FIXED COVER	1	67	BM10-11-003	LIFTING HANDLE BRACKET	1	130	WB-1/2*28	FLAT WASHER	1
11	BM10-02-005	Gear-32T	1	68	BM10-11-004	LIFTING HANDLE	1	131	WB-1/4	FLAT WASHER	2
12	BM10-02-006	CLUTCH COPPER BUSHING	2	69	BM10-11-005	SPRING	1	132	WB-10mm	FLAT WASHER	2
13	BM10-02-008	Gear-42T	1	70	11007-11-006	SEAT OF SWITCH	1	133	WB-5/16*Ø16	FLAT WASHER	2
14	BM10-02-009	Washer	1	71	GM12-12-001	BOWL	1	134	WPA-6*16	PLASTIC WASHER	5
15	BM10-02-010	Spacer	1	72	GM12-12-002	BEATER	1	135	CY-12m/m-3.2mm9.3W	RUBBER SEAL	1
16	BM10-02-018	Gear-49T	1	73	GM12-12-003	HOOK	1	136	WF-GDA-AG-20	CABLE TIE	1
17	BM10-02-020	CLUTCH	1	74	GM12-12-004	WHIP	1	137	ABLE-16-3C-UL-U(110v	CABLE TIE	1
18	BM10-02-021	SLEEVE DRIVE	1	75	GM12-13-001	FIXED SHEET OF GUARD	1	138	XL710-1-ROHS(110v)	POWER BOX	1
19	11012-02-023	Pin	8	76	GM12-13-002	ACTIVE SHEET OF GUARD	1	139	XL710-L1	CONNECTING WIRE	1
20	11012-02-024	SPRING SHEET	8	77	BM10-13-003	FIXED RING	1	140	XL710-L2	CONNECTING WIRE	1
21	BM10-03-001	3-LAY SHAFT GEAR	1	78	GM12-13-007	SWITCH SHAFT	1	141	XL710-L3	CONNECTING WIRE	1
22	GM12-04-001A	Worm gear Shaft	1	79	11007-13-008	SWITCH SEAT	1	142	XL710-L4	CONNECTING WIRE	1
23	GM12-04-002	28T WORM GEAR	1	80	BR-6001Z	BEARING	4	143	V-15-1A5	LIMIT SWITCH OF GUARD	1
24	GM12-04-003	26T gear	1	81	BR-6003Z	BEARING	1	144	V-155-1A5	LIMIT SWITCH OF LIFTING	1
25	11012-04-008	OIL BAFFLE	2	82	BR-6004Z	BEARING	1	145	S+F-3/16*1/2	FLAT SCREW	4
26	GM12-05-001	Motor	1	83	BR-6202Z	BEARING	2				
27	GM12-05-001CO	Start Capacitor	1	84	BR-6202ZZ	BEARING	1				
28	GM12-05-001CCUN	Run Capacitor	1	85	BR-6203ZZ	BEARING	1				
29	GM12-05-001FAN	Fan	1	86	KR-5*5*30	KEY	1				
30	GM12-05-002	Motor Shaft	1	87	KRR-4*4*25	KEY	1				
31	GM12-05-003	Motor front cover	1	88	KRR-5*5*15	KEY	2				
32	GM12-05-004/50Hz	GOVERNOR PLATE	1	89	KRR-5*5*20	KEY	1				
33	GM12-05-005/50Hz	GOVERNOR	1	90	NUT-1/4*20NC	CAP SCREW	3				
34	11012-07-001	Handle ball	1	91	NUT-1/8*40NC	CAP SCREW	1				
35	GM12-07-002	Handle arm	1	92	NUT-5/16*18NC	CAP SCREW	5				
36	GM07-07-003A	Control panel	1	93	NUTBA-1/2*20NI	CAP SCREW	1				
37	GM07-07-003B	Back cover	1	101	S-1/4*3	SCREW	1				
38	GM07-07-003C	Sticker of panel	1	102	S-1/4*5/8	SCREW	6				
39	GM12-07-004	ECCENTRIC SHIFT SHAFT	1	103	S-5/16*3/4	SCREW	4				
40	GM12-07-005A	SHIFT SELECTOR	1	104	S-C-1/4*1/2	SCREW	2				
41	BM10-07-006	ECCENTRIC SHAFT	1	105	S-C-1/4*5/8	SCREW	3				
42	BM10-07-007	Bolt	2	106	S-C-1/4*3/4	SCREW	3				
43	BM10-07-008	SHIFT FORK PLUNGER	2	107	S-S-5/16*3/8	SCREW	1				
44	BM10-07-009	SHIFTER FIXED SHAFT	1	108	S+F-1/8*3/8	FLAT SCREW	4				
45	BM10-07-010	SHIFT FORK	1	109	S+F-3/16*1/4	FLAT SCREW	2				
46	GM12-07-011	Spring	2	110	S+R-1/8*1/2	CROSS SCREW	3				
47	BM10-07-012	Spring	2	111	S+R-1/8*3/16	CROSS SCREW	4				
48	BM10-08-001	18T gear	1	112	S+R-1/8*5/8	CROSS SCREW	1				
49	GM12-08-002	62T internal gear	1	113	S+R-3/16*3/8	SCREW	6				
50	BM10-08-003	Head ring	1	114	S+R-3/16*1/4	FLAT SCREW	10				
51	GM12-08-004	Planetary Head	1	115	S+R-3/16*3/8	FLAT SCREW	4				
52	BM10-08-005	AGITATING SHAFT	1	116	SB-6	BALL	2				
53	BM10-08-007	TAPERED PIN	1	117	SPP-2*8	SPRING PIN	2				
54	BM10-09-002	Back cover	1	118	SPP-3*18	SPRING PIN	1				
55	GM12-09-003	FRONT COVER	1	119	SPP-3*22	SPRING PIN	2				
56	GM12-09-004	Base	1	120	SPP-4*30	SPRING PIN	1				
57	GM12-09-005A	REAR COVER	1	121	SPP-6*16	SPRING PIN	2				

