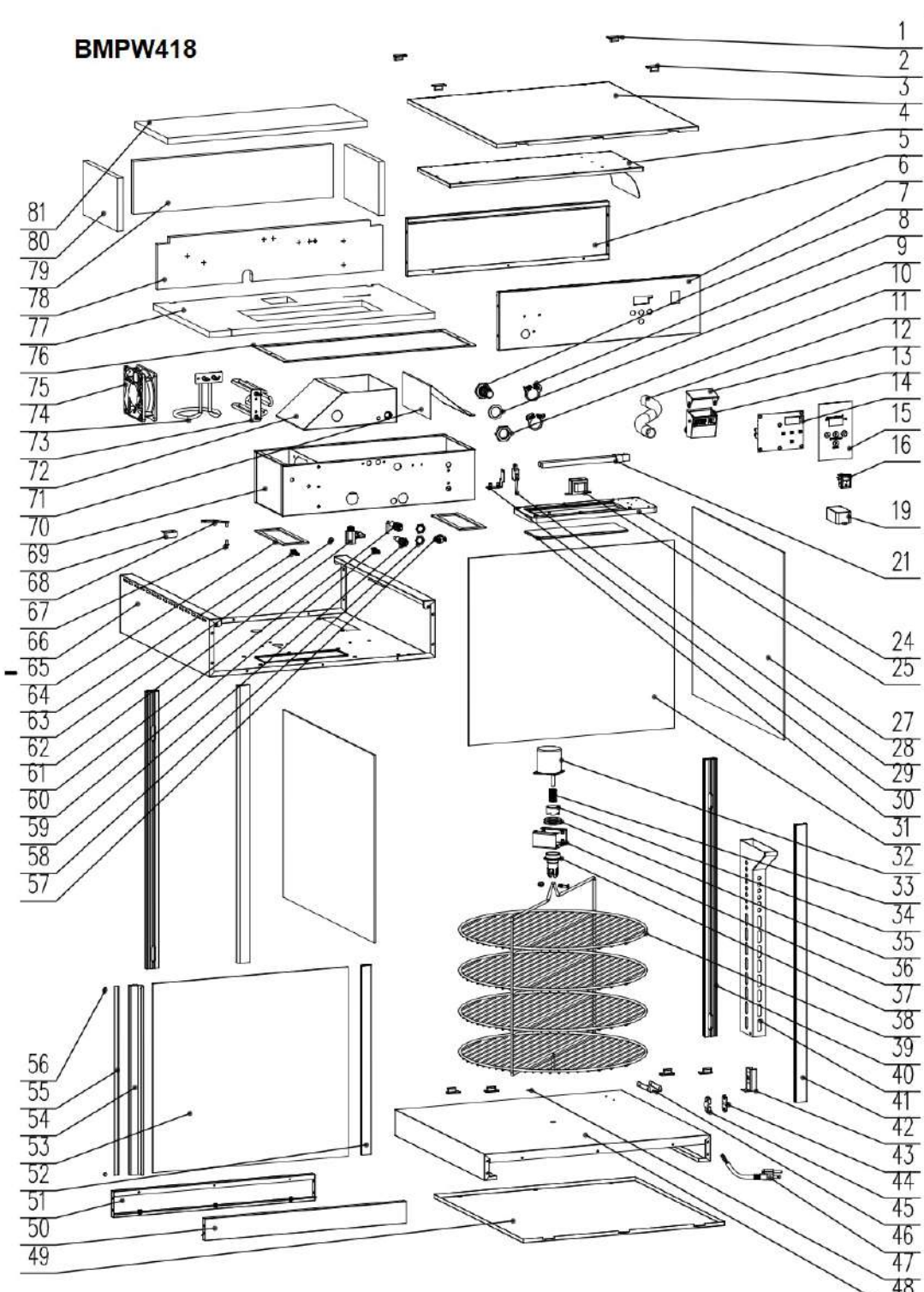


BMPW418



55	1.1.B.B66.12	Door magnet strip	1	81	1.1.E.E15.52	Top Insulation	1
54	1.1.B.B66.14	Door Handle	1	80	1.1.E.E15.55	Side insulation	2
53	1.1.E.E2.08.43	Door glass	1	79	1.1.E.E15.54	Rear insulation	1
52	1.1.B.B66.13	Door Frame	1	78	1.1.E.E15.53	Front insulation	1
51	1.1.B.B66.09	Rear Bottom panel	1	77	1.1.E.E15.51	Bottom insulation	1
50	1.1.B.B66.10	Front Bottom panel	1	76	1.1.C.C92.59	Seal	1
49	1.1.B.B66.02	Bottom board	1	75	1.1.A.A03.01.71	Fan motor	1
48	1.1.B.B66.05	Bottom cover	1	74	1.1.B.B66.34	Heating element 2	1
47	1.1.C.C81.12	Shelf bearing	1	73	1.1.B.B66.01	Heating element 1	1
46	1.1.A.A08.03.42	American power line	1	72	1.1.B.B66.24	Water tray	1
45	1.1.B.B66.31	Wind-guiding path bracket	1	71	1.1.B.B66.30	U wind-guiding panel	1
44	1.1.C.C24.01	Wires clip cover	1	70	1.1.B.B66.17	U box	1
43	1.1.C.C24.02	Wires clip	1	69	1.1.B.B46.38	Door stopper	1
42	1.1.B.B66.40	Wires clip holder	1	68	1.1.B.B33.19	Door gemel	1
41	1.1.B.B66.15	Front Pillar	1	67	1.1.B.B33.22	Doop pin	1
40	1.1.B.B66.27	Wind-guiding path	1	66	1.1.B.B66.06	Top panel	1
39	1.1.B.B66.16	Rear Pillar	3	65	1.1.C.C92.58	Seal	2
38	1.1.B.B02.06.84	Rotary shelf	1	64	1.1.A.A06.03.96	Temperature sensor	1
37	1.1.C.C81.11	Lower clutch	1	63	1.1.C.C92.60	Rubber Ring	1
36	1.1.B.B46.46	Motor Bracket	1	62	1.1.B.B66.38	Float	1
35	1.1.B.B37.05	Bearing	1	61	1.1.A.A06.03.97	Water level sensor (upper)	1
34	1.1.C.C81.10	Upper clutch	1	60	1.1.A.A06.03.35	Temperature sensor	1
33	1.1.B.B33.41	Spring	1	59	1.1.A.A06.03.98	Water level sensor (lower)	1
32	1.1.A.A03.01.61	Motor	1	58	1.1.B.B66.39	Screws	2
31	1.1.E.E2.08.45	Back glass	1	57	1.1.A.A06.03.12	Controller	1
30	1.1.E.E2.12.155	Top light glass	1	56	1.1.B.B33.23	Magnet	2
29	1.1.B.B46.49	Micro Switch bracket	1				
28	1.1.A.A07.14	Micro Switch	1				
27	1.1.E.E2.08.44	Side glass	2				
26	1.1.C.C04.01	Light tube bracket	1				
25	1.1.A.A06.03.93	Transformer	1				
24	1.1.C.C81.06	Light glass plate	1				
21	1.1.A.A01.14.56	LED LIGHT	1				
19	1.1.A.A01.10.30	transformer of LED	1				
16	1.1.A.A07.19	ON/OFF Switch	1				
15	1.1.D.D04.14	Operation sticker	1				
14	1.1.A.A06.03.99	Circuit Board	1				
13	1.1.C.C92.51	Infall box	1				
12	1.1.C.C92.52	Infall box cover	1				
11	1.1.E.E7.41	Inlet Pipe	1				
10	1.1.B.B66.37	Screw nut	1				
9	1.1.C.C92.56	O Ring	5				
8	1.1.C.C92.55	Clip	2				
7	1.1.B.B66.35	Screw	1				
6	1.1.B.B66.08	Front top cover	1				
5	1.1.B.B66.07	Rear top cover	1				
4	1.1.B.B66.21	U cover	1				
3	1.1.B.B66.03	Top Cover	1				
2	1.1.C.C81.02	Right Feet	4				
1	1.1.C.C81.01	Left Feet	4				
NO:	Spare parts Code	Des	QTY				