

BakeMax[®] **Titan Series**

BakeMax BMREF Titan Series Refrigerated Countertop Display Operations Manual



Questions? OEM Parts, Contact Us:
Toll Free: 1-800-565-2253
Email: Info@BakeMax.com
www.BakeMax.com



Warning & Safety

PLEASE READ AND FOLLOW INSTRUCTIONS BELOW TO PREVENT INJURY OR DAMAGE TO THE PRODUCT

BakeMax® (a registered trademark of Titan Ventures International Inc or TVI) is not responsible for any harm or injury caused due to any person's improper or negligent use of this equipment. The product shall only be operated by someone over the age of 18, of sound mind, and not under the influence of any drugs or alcohol, who has been trained in the correct operation of this machine, and is wearing authorized, proper safety clothing. This machine is intended for commercial use only. Any modification or miss use to the machine voids any warranty and may cause harm to individuals using the machine or in the area of the machine while in operation.

- When using the machine, please ensure that you have read all of the instructions within this manual.
- Be aware of your surroundings when using this machine, ensure there are no children or any other persons who are near the machine before operating.
- Do not put hand near moving parts.
- Remove all obstacles, which may interfere with machine functions.
- Keep work area clean and clear of clutter.
- Do not sit or stand on machine.
- Do not wear loose clothing or jewellery when operating machine as it may get caught in moving parts and cause injury.
- Stop using the machine and have it checked by an authorized service personal if it is not working properly.
- Disconnect from power source before performing and maintenance or cleaning on the machine.
- When the machine is not in use, please clean and store properly,
- Do not place any electrical parts or plug / cord in water or liquid.
- If the supply cord is damaged it must be replaced by an authorized service agent in order to avoid any electrical hazards.
- Keep power cord away from heat.
- Always ensure to follow local laws when operating your machine.

Product Installation & Set Up

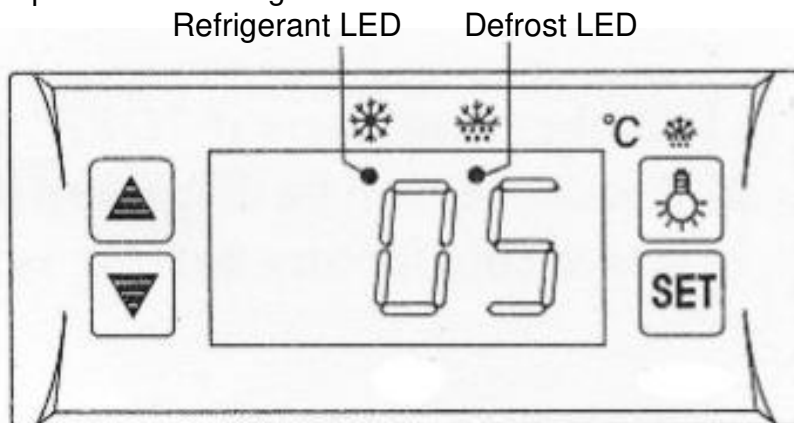
- After unpacking and cleaning your new countertop refrigerated showcase. Let it sit upright for at least 24 hours before plugging it in. Never tilt machine more than 45°. If the unit is laid on its side to be moved, let the unit sit fully upright for 24 hours before plugging it back in.
- Make sure all accessories are installed (shelves, shelf clips, etc....) before plugging in the unit.
- Ensure the unit is placed on a smooth, level flat surface.
- The display case should be kept away from heat, humidity and dusty areas as it can cause stress on the unit.
- During high humidity days, condensation may be found on the outside of the refrigerator. This is not a problem, this is caused by high ambient humidity. Simply use a cloth to wipe it. **Note:** This unit is for indoor use only.
- Ensure there is at least 6" space available on each side for air to properly circulate around the unit.
- Never block the air suction inlet or air vents.
- Make sure the unit has reached the desired temperature before loading the unit with products.
- Ensure any items that are warm / hot to be cooled before placing in the unit.
- Minimize the time with the door is open and reduce opening and closing frequently.
- Do not overfill the unit or it may hinder its operation.
- Adjust the rack height for proper food storage.
- After power outage or unplugging the refrigerator, always wait at least 5 minutes before starting the refrigerator again.
- Never put any flammable or explosive items inside the refrigerator such as gasoline or alcohol. Never put any dangerous product near the refrigerator.
- Do not store medication in the refrigerator.

Warranty Notes: Malfunction due to high ambient temperatures, humidity, or improperly maintained condenser coil will void the warranty. Failure to properly maintain the unit will also void the warranty. This includes, but is not limited to, basic preventative maintenance like cleaning the condenser coil. Any damage that occurs as a result of negligence or improper handling. Overloading or improper loading of the unit in a manner that prevents proper airflow.





Digital Temperature Controller

The digital temperature controller is easy to operate and controls the compressor.

- The main functions are: Temperature display, manual control, automatic defrost, light control, value storing, self-testing and parameter locking.



Front Panel Operation

1. How to Set temperature
Press “set” button, the set temperature is displayed.
Press  or  button to modify and store the displayed value.
Press “set” button to exit the adjustment and display the cold-room temperature.
2. If no more button is pressed within 10 seconds, the cold-room temperature will be displayed.
3. Lights: Press  button to turn them on and off.
Manual start/stop defrost: Press  button and hold for 6 seconds to defrost or stop defrost.
4. Refrigerant LED: During refrigeration, the LED is on; When the cold room temp. is constant, the LED is off; During the delay start, the LED flashes.
5. Defrost LED: during defrosting, the LED is on; When is stops defrosting, the LED is off, During the delay display of defrost, the LED flashes.

Cleaning & Maintenance

- This unit has been coated for shipping purposes, please clean before use. Dip a soft cloth in neutral detergent (dish detergent) to clean the outside of the refrigerator and then wipe it with a dry soft cloth.
- Do not use any liquid pressurised cleaning equipment on this machine.
- Disconnect power supply before cleaning.
- Only use food grade nonabrasive cleaning agents.

Keep the refrigerator clean and periodic maintenance is necessary. Always unplug the power cord before maintenance. Never use a damaged plug or loose socket to prevent electric shock or short circuiting. Never flush the refrigerator. Never use alkaline detergent, soap, gasoline, acetone or bush.

Cleaning the Condenser Coil

- For efficient operation, keep the condenser surface free of dust, dirt, and lint.
- We recommend cleaning the condenser coil at least once per month.
- Clean the condenser with a commercial condenser coil cleaner, available from any kitchen equipment retailer.

Cleaning the Fan Blades and Motor

- If necessary, clean the fan blades and motor with a soft cloth.
- If it is necessary to wash the fan blades, cover the fan motor to prevent moisture damage.

Shutting Down the Unit for Extended Period of Time

- Take out all food and unplug the wall socket. Clean both inside and outside of the refrigerator thoroughly and open the door to sufficiently dry. Leave door open when storing for long periods of time. Clean the condensate tray and wipe dry.

Technical Specifications

- BMREF28 Exterior Dimensions (WDH): 27.6" x 22.5" x 27"
- BMREF35 Exterior Dimensions (WDH): 35.4" x 22.5" x 27"
- Electrical: 120v / 15 Amps / 230 watts / 60Hz / 1Ph
- Nema: 5-15P Plug
- BMREF28 Net Weight: 141 lb / 64 kg
- BMREF35 Net Weight: 156 lb / 71 kg

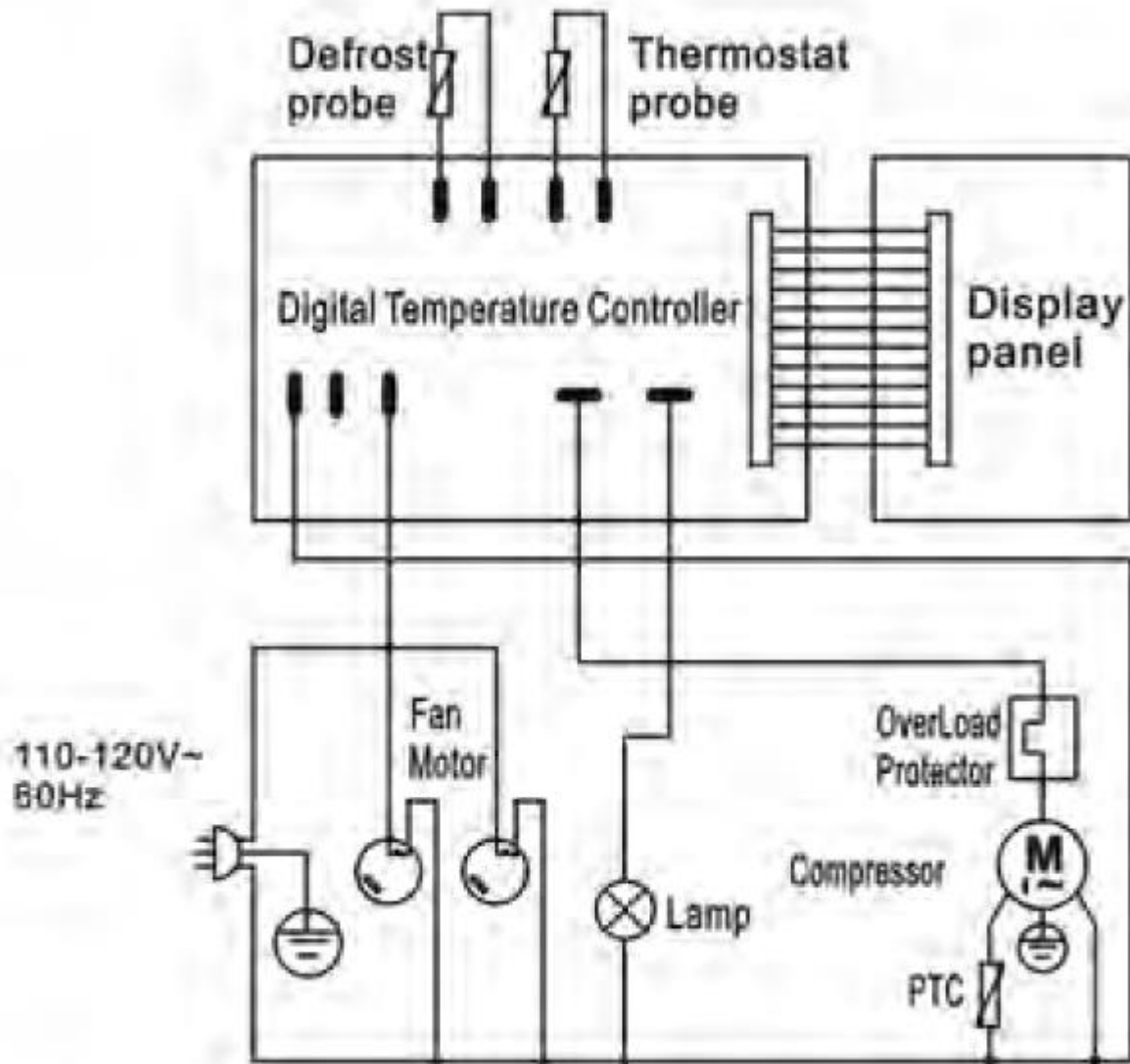
Troubleshooting

Problem	Possible Cause	Remedy
No Refrigeration / Compressor is Not Running	Fuse blown or circuit breaker tripped.	Replace fuse or reset circuit breaker
	Power cord unplugged	Plug in power cord.
	Thermostat set too high.	Set thermostat to lower temperature.
	Cabinet in defrost cycle.	Wait for defrost cycle to finish
Cabinet Temperature is too Warm	Thermostat is set too high.	Set thermostat to lower temperature.
	Airflow is blocked.	Ensure there is at least 6" of space available around the unit. Make sure the ducts are not blocked. Make sure the inside of the unit is not over filled.
	Low refrigerant levels.	Contact an authorized service technician to check refrigerant levels.
	Door is slightly ajar.	Make sure door(s) is completely closed.
	External heat source.	Make sure the unit is away from direct sunlight and other sources of heat.

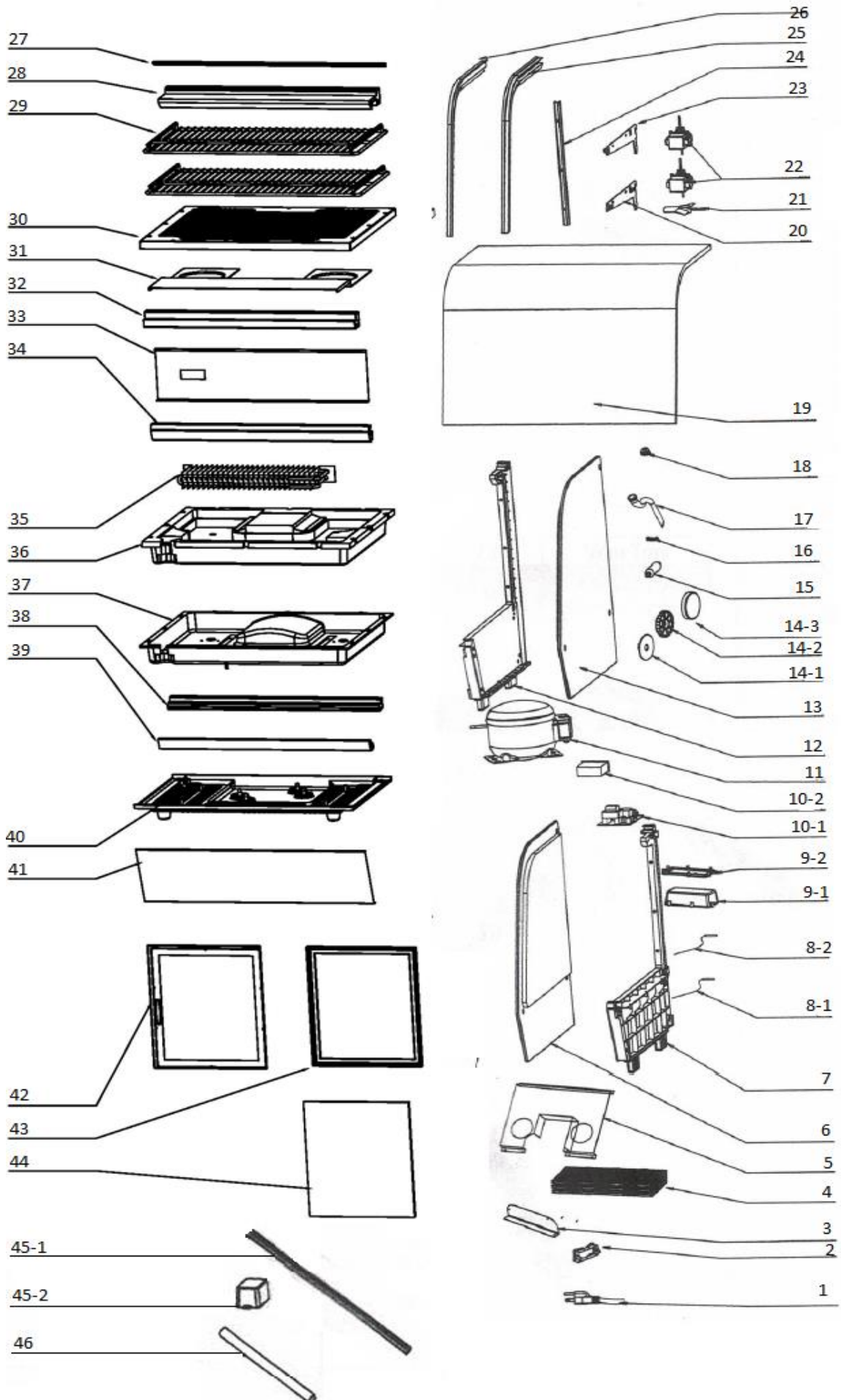
The following situations are not problems:

- The murmur of water is heard when the refrigerator is working. This is normal as the coolant is circulating in the system.
- During high humidity days, condensation may be found on the outside of the refrigerator. This is not a problem, this is caused by high ambient humidity. Simply use a cloth to wipe it.

Wiring Diagram

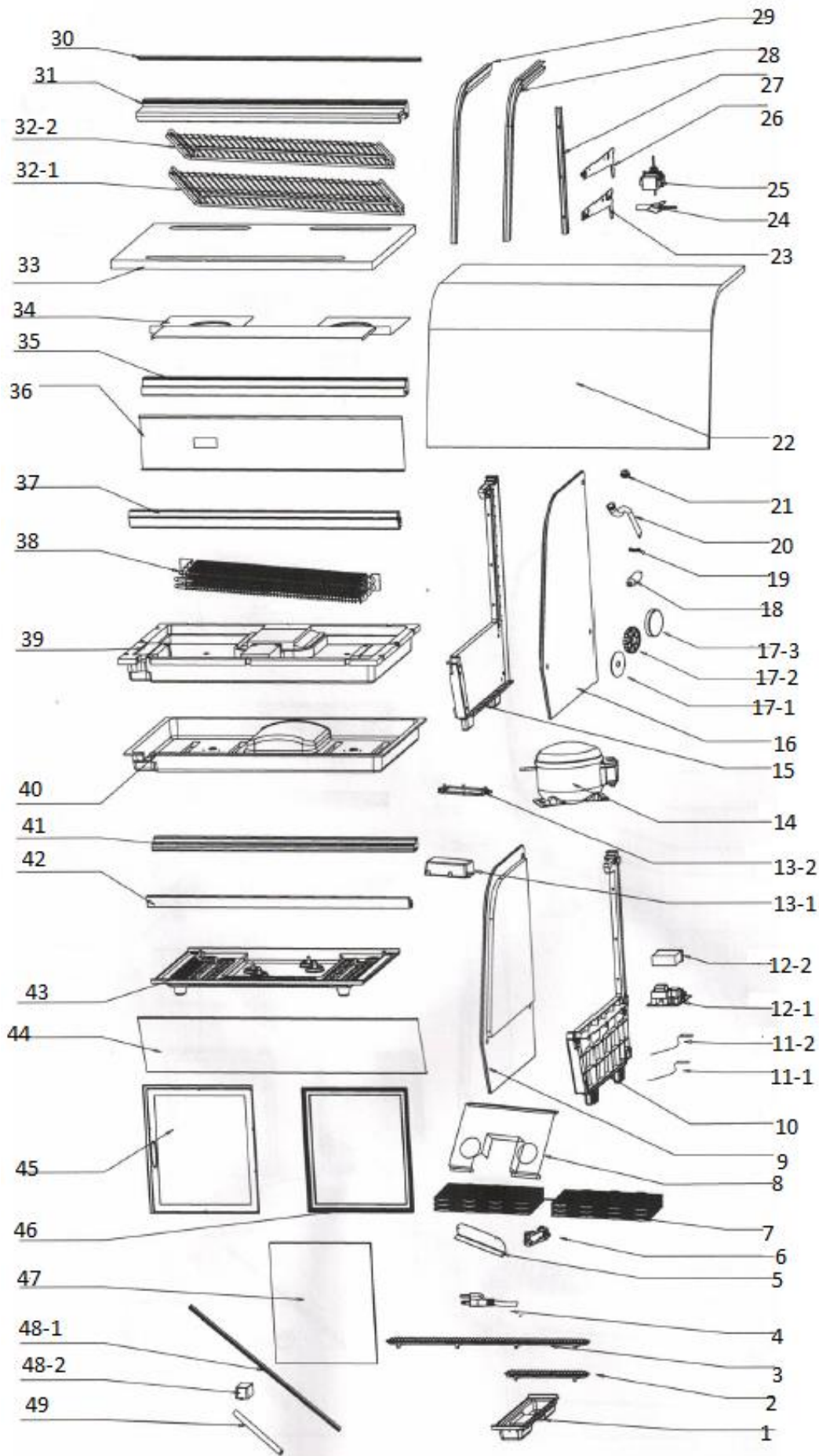


BakeMax BMREF28 Parts Break Down



Position	Description	Position	Description	Position	Description
1	Power Cord	18	Motor Fixer Ring	39	Front Bottom Pillar
2	Control Bracket	19	Curved Front Glass	40	Bottom Base of Compressor
3	Fixed Board of PCB Box	20	Left Shelf Bracket	41	Front Frame
4	Condenser	21	Fan Blade	42	Inner Door Frame
5	Condenser Cushion	22	Motor Fan	43	Outer Door Frame
6	Left Glass	23	Right Shelf Bracket	44	Door Glass
7	Left Panel	24	Pillar for Bracket	45-1	LED Light
8-1	Temperature Probe	25	Left Seal	45-2	LED Power Drive
8-2	Defrost Probe	26	Right Seal	46	Accumulator
9-1	Control Box	27	Decorative Board		
9-2	Control Box Cover	28	Top Panel		
10-1	Main Circuit Board	29-1	Shelf 1		
10-2	Digital Controller	29-2	Shelf 2		
11	Compressor	30	Vent Tray		
12	Right Panel	31	Evaporator Protect Board		
13	Right Glass	32	Rear Middle Pillar		
14-1	Decoration Nut Gasket	33	Rear Base Panel		
14-2	Nut Gasket	34	Front Middle Pillar		
14-3	Nut Decoration	35	Evaporator		
15	Dry Filter	36	Foam Base of Evaporator		
16	Wire Clip	37	Plastic Base for Foam		
17	Water Pipe	38	Rear Bottom Pillar		

BakeMax BMREF35 Parts Break Down



Position	Description		Position	Description		Position	Description
1	Water Tray		17-2	Nut Gasket		35	Rear Middle Pillar
2	Cover for Air Outlet		17-3	Nut Decoration		36	Rear Base Panel
3	Cover for Air Suction		18	Dry Filter		37	Front Middle Pillar
4	Power Cord		19	Wire Clip		38	Evaporator
5	Fixed Board of PCB Box		20	Water Pipe		39	Foam Base of Evaporator
6	Control Bracket		21	Motor Fixer Ring		40	Plastic Base for Pillar
7	Condenser		22	Curved Front Glass		41	Rear Bottom Pillar
8	Condenser Cushion		23	Left Shelf Bracket		42	Front Bottom Pillar
9	Left Glass		24	Fan Blade		43	Bottom Base of Compressor
10	Left Panel		25	Motor Fan		44	Front Frame
11-1	Temperature Probe		26	Right Shelf Bracket		45	Inner Door Frame
11-2	Defrost Probe		27	Pillar for Bracket		46	Outer Door Frame
12-1	Main Circuit Board		28	Left Seal		47	Door Glass
12-2	Digital Controller		29	Right Seal		48-1	LED Light
13-1	Control Box		30	Decorative Board		48-2	LED Power Drive
13-2	Control Box Cover		31	Top Panel		49	Accumulator
14	Compressor		32-1	Shelf 1			
15	Right Panel		32-2	Shelf 2			
16	Right Glass		33	Vent Tray			
17-1	Decoration Nut Gasket		34	Evaporator Protect Board			

Warranty & Service

BakeMax provides a 1-Year Limited Parts and Labor warranty on most items, there are select items which carry a Limited 2-Year Warranty. Extended Warranty is available on some products. Please contact us for details. The Warranty is not transferable and is limited to original installation of equipment sold by BakeMax for the original user.

For all Warranty Claims, Proof of Purchase and/or Serial Number is required. Once the machine is approved, BakeMax will provide our customers with on-site Warranty Coverage on all equipment more than 100lbs. BakeMax assumes no responsibility for down time or loss of product. Repairs must be Pre-Authorized by BakeMax and have a Service Authorization Number issued prior to commencing Warranty Service.

Warranty begins 10-Days after shipping from warehouse; delays in installation which would extend the Warranty must be Approved. All equipment must be installed and connected by Qualified Professionals in accordance with the Manual Specification. Products shipped are to be inspected at time of delivery, the receiver is responsible for inspection.

Any abuse or improper use of the equipment will void the warranty. This includes failure to follow all cleaning instructions, improper installation, improper maintenance, failure to follow capacity charts, improperly wired electrical connections. The Warranty does not apply to abuse, willful or accidental damage, or to products used for other than their intended purpose. Normal wear parts such as Accessories, Attachments, or Electrical Components such as Fuses, Bulbs, Elements, and Switches carry a 90-Day Warranty only.

Bench Warranty (Machines Weighing 100 lb. or less)

Once the machine is Approved for Warranty Service, if the machine requires Warranty work in less than 30 days of purchase date, BakeMax will pay all shipping charges. Once the machine is received and repaired it will be returned to the user at BakeMax expense. Freight Damages during return shipping is the responsibility of the owner of the machine.

The following is not covered under the BakeMax Warranty:

1. Overtime Labor Rates are not covered by BakeMax.
2. All parts will be shipped via Ground Courier only; If Express Shipping is required, it will be the responsibility of the Customer or Dealer.
3. Travel for Warranty Service is covered up to 100 Miles /160 Km Roundtrip, any further mileage will be the responsibility of the Customer or Dealer.
4. There is no on-site Warranty Service for Residential Addresses or addresses outside of the contiguous United States (*Lower 48*) or Canada.

***BakeMax machines sold outside of the contiguous United States (Lower 48), or Canada will carry 1-Year Parts Warranty only.*

Terms & Conditions

Terms

Net 15 days subject to Credit Approval. All past due Accounts are subject to 2% per month Service Charge as per Credit Application. We accept Visa, MasterCard, and Discover Credit Cards. We also accept E-Transfer & Wire Transfer, additional fees may apply.

Pricing

All prices are subject to change without notice. All prices are Sales Tax Extra, should you be claiming Tax Exemption, Tax Exempt Forms must accompany your Purchase Order. BakeMax products are sold in Canadian and US Dollars. BakeMax is not responsible for specifications errors or printing errors.

Shipping

Free shipping to Canada and the U.S. Minimum order \$6,000 for BakeMax and \$10,000 for BakeMax America Cooking Line. Tailgate Delivery is \$90.00 minimum. All checks made Payable to Titan Ventures International Inc. BakeMax is not responsible for goods damaged during shipping. BakeMax is not responsible for any delays in delivery once product has left our Warehouse and is in the carrier's possession. Products shipped are to be inspected at time of delivery, the receiver is responsible for inspection. Damaged Freight Claims are to be claimed with the carrier. BakeMax assumes no responsibility for Damaged Freight. Shipping Insurance available by request. By signing your name on the delivery receipt without noting any damages, you are stating that you have received your shipment in Acceptable Condition.

Return Policy

Returns will not be Approved unless in Writing. Returns must be made within 30-Days of Purchase and must have a Return Authorization Number issued before returning. The purchase order number, reason for return, and the serial number(s) of the unit are required for the Return Authorization Number. Minimum return amount of \$100.00.

Returns are subject to a minimum restocking fee of 30%. The cost of any repairs or re-crating required will be charged back to the dealer. If there is a manufacturer's defect BakeMax® will pay standard freight returned and prepaid shipping back to the customer.

Special Order Items, Clearance / Discontinued Equipment, Parts, Refurbished/Demo Equipment, or Non-Standard items are not Returnable.

Ordering Information

Send purchase orders to BakeMax via e-mail orderdesk@bakemax.com or Fax (506-859-6929). Use Model or Part number when ordering including Voltage Requirements, and Product Description. Please include the Dealer, Name, Address, terms, special delivery, or instructions required or attention names to be applied to packaging. Please notify BakeMax should you need order confirmation or tracking numbers, by calling 1-800-565-2253 or email orderdesk@bakemax.com.

Special Terms and Conditions

BakeMax reserves the right to make improvements or equipment changes without prior permission. Setup and Installation are the end user's Responsibility. Failure to properly Install or Maintain Equipment may Void Warranty.

Catalog, Spec Sheets and Website

BakeMax is not liable for incorrect information found in our Catalog, Spec Sheets or Website. Please contact us to confirm specifications. Pictures and specifications are for general purposes only. Product may not be exactly as shown. Prices and availability may change at any time without notice. Dimensions shown may change at any time without notice.