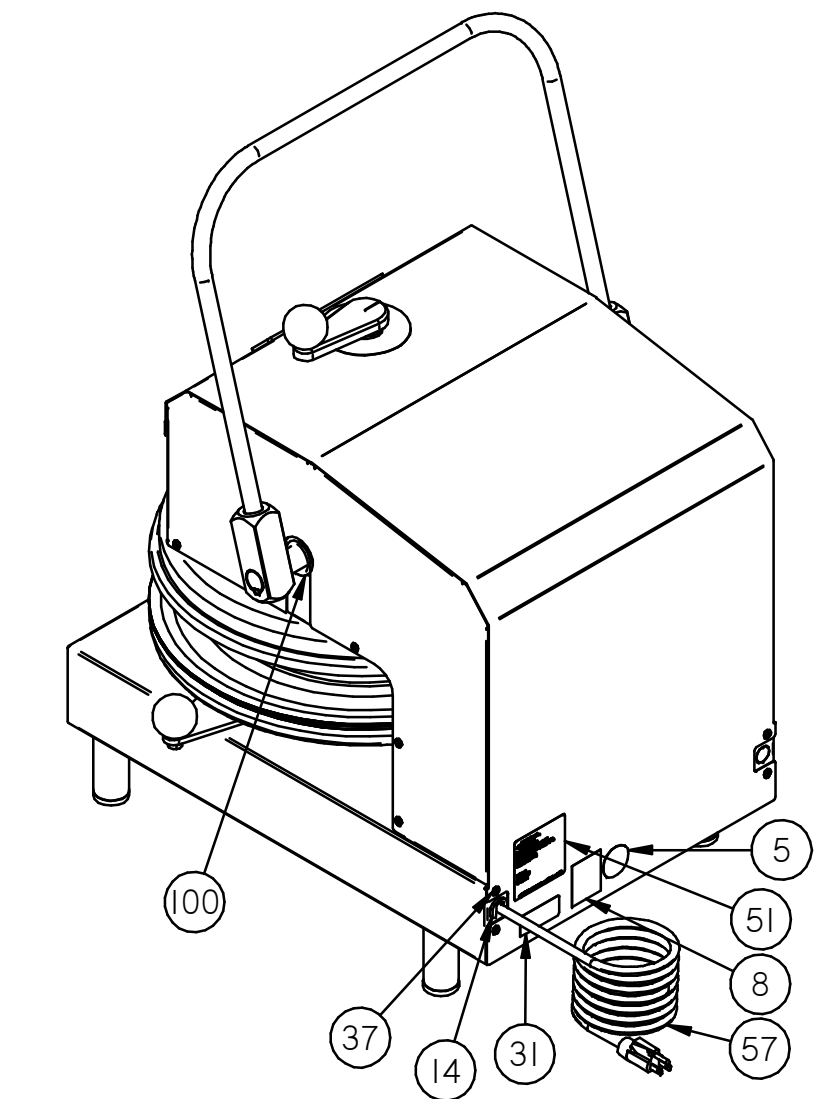
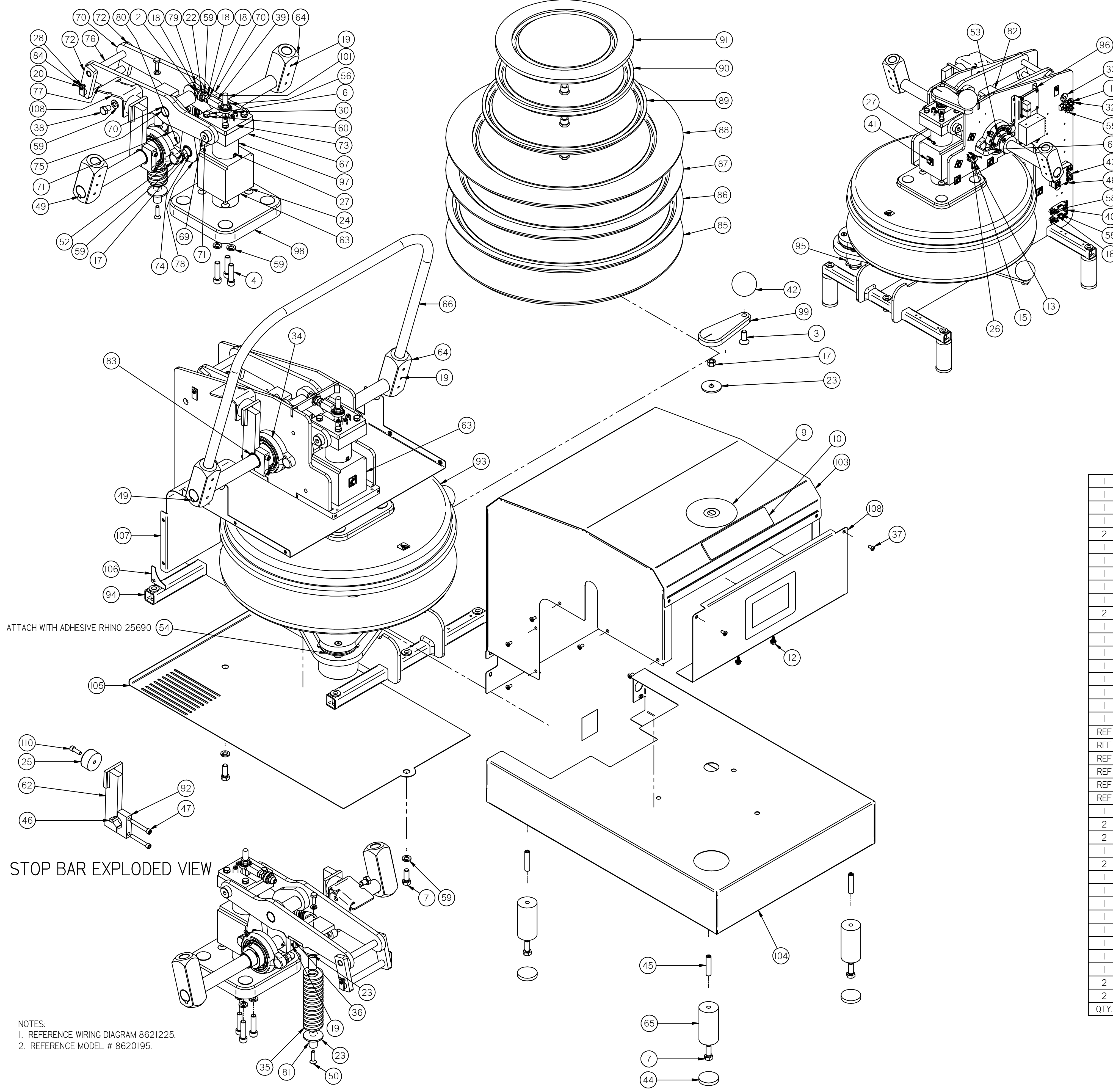


REV	DATE	BY	DESCRIPTION	ECO #
A	4-2-2021	MAS	DRAWING CREATED	
B	4-8-2022	MAS	REMOVE (II) 8601075, ADD (II) 8601087	



QTY.	ITEM #	PART #	Title
2	70	8603101	DXE LINK STABILIZER
2	69	8601220	M-DXE DRIVE PIN
1	68	8601219	M-DXE JACK ADJ STOP
1	67	8601217	M-DXE ADJSMNT SCREW RETAINER
1	66	8601087	HANDLE, DXM STEEL
4	65	8601083	M-DP LEG 3"
2	64	8601081	M-DP DXM HANDLE ADAPTOR
1	63	8600920	DP JACK SHAFT HOUSING ASSY.
1	62	8600450	DXM STOP BAR WELDMENT
1	61	8600420	M-DXM LIMIT SWITCH WELDMENT
5	60	79426	WASHER LOCK HEL SPR 1/4 ZP
12	59	79418	WASHER LOCK HEL SPR 3/8 ZP
2	58	76752	FUSE MDA-10/TCA 10A
REF	57	74609	CORDSET 120V 16/3 SJOW 5-15P
1	56	73247	NUT 3/8-16 JAM NYLON INSERT ZPS
REF	55	72223	TERM BD 601-2-KT37, 38,39
1	54	71041	SEAL SHAFT 2.500
2	53	70597	SCREW SET 5/16-24x0.625 CP
4	52	70563	BOLT CAR 3/8-16x1.250
1	51	70268	DECAL HIX ID. 3" X 3" SILVER
1	50	70077	SCREW FHSKT 1/4-20x1.000
2	49	67490	KEY STL .250x.250x1.50 UNDSZ
1	48	66729	SCREW MCH 10-32x0.375 GRND
2	47	65242	SCREW CPSKT 1/4-20x1.750
1	46	63916	KEY STL .250x.250x.750
4	45	63746	SCREW SET 3/8-16x1.750
4	44	63711	FOOT RUBBER 1-1/2"ODx1/4"
REF	43	62731	RELAY SS 25A 3-32VDC INPUT
1	42	62561	KNOB PHENOLIC CL 852-PB
11	41	62448	WIRE CABLE CLIP ADHESIVE BACK
2	40	61638	FUSE HOLDER S8301-I BUSSMANN
1	39	61220	ROD END 3/8-24 RH FEM
1	38	50342	BOLT 3/8-16x0.500
16	37	50180	SCREW MCH 10-32x0.375 PHPH SS
1	36	39748	KEY STL .250x.250x1.75 UNDSZ
1	35	39705	SPRING DIE M150-500
2	34	39586	BEARING 1-1/4" 2 BOLT FLANGE
1	33	39446	GROMMET .313IDx.563 GRV
2	32	34592	SCREW MCH 8-32x0.625 PHPH
1	31	33605	DECAL, UNPLUG MACHINE
3	30	33071	DETENT 3/8-16X0.188 BALL
1	29	33020	MANUAL OWNERS DXM
4	28	32228	WASHER LOCK HEL SPR #10 ZP
1	27	32224	SCREW SET 3/8-16x0.375 DP
REF	26	31823	SWITCH MICRO SMALL SEMI-HOOK
1	25	31453	FOOT RUBBER 0.75x1.50x0.25
4	24	28142	SCREW FHSKT 5/16-18x1.000
3	23	25720	WASHER FLT .406X1.500X.120 ZPS
2	22	16683	WASHER FLT .375x0.875x.078 ZPS
REF	21	15644	SLEEVE SZ 3 #710C-3BK
REF	20	15321	SCREW MCH 10-32x0.375 PHPH
REF	19	15131	SCREW SET 1/4-20x0.250
REF	18	14647	NUT HEX JAM 3/8-16 NC ZP
REF	17	14571	NUT 3/8-16 ZPS
REF	16	14524	SCREW MCH 4-40X0.250 PHPH
1	15	13919	WASHER LOCK HEL SPR #4 ZP
2	14	13250	CORD GRIP HEYCO 1557 RDD201
2	13	13103	SCREW MCH 4-40x0.750 RHSL
1	12	11404	SCREW MCH 10-32x0.375 SS
2	11	11335	WIRE KIT, DXM 4.3" 120V RP
1	10	11327	DECAL, DOUGHXPRESS DOMED 6.75 X 1.5
1	9	11300	DECAL, THICK THIN
1	8	10963	DECAL, QR CODE DXP
1	7	10850	BOLT 3/8-16 X 1.000
1	6	10678	BOLT 1/4-20x0.750
1	5	10664	DECAL MADE IN USA
3	4	10341	SCREW CPSKT 3/8-16X1.500 GD 8
1	3	10027	SCREW FHSKT 3/8-16X1.000 SS
2	2	10024	SCREW SET 3/8-24 X 2.000
2	1	10021	WASHER LOCK HEL SPR #8 ZP

ATTACH WITH ADHESIVE RHINO 25690

STOP BAR EXPLODED VIEW

- NOTES:  
 1. REFERENCE WIRING DIAGRAM 8621225.  
 2. REFERENCE MODEL # 8620195.

QTY.	ITEM #	PART #	Title
1	110	90134	SCREW CPSKT 1/4-20x0.750
1	109	8621240	ASSEMBLY, DISPLAY NO SWITCHES SS
1	108	8621237	HANDLE STOP, DX SHEETMETAL
1	107	8621230	DX HOUSING FRAME COVER 4.3" CLCD SS
2	106	8621226	COVER, FRAME ARCH STAINLESS STEEL
1	105	8621221	BOTTOM COVER 4.3" CLCD
1	104	8621217	HOUSING, BOTTOM 4.3" CLCD STAINLESS
1	103	8621211	ASSY, UPPER HOUSING DXM 4.3" CLCD SS
1	102	8621174	DX SERIES PACKAGING
1	101	8621153	M-DX JACK .5 HEX SHAFT
2	100	8621132	GROMMET 1.00IDx.095 GRV
1	99	8621111	M-HANDLE LC
1	98	8621100	P-ASSY UPPER PLATEN MOUNT PLATE
1	97	8621026	JACK SHAFT D-TXM-2-18
1	96	8620332	ASSEMBLY, I/O / PWR SUPPLY DX 4.3"
1	95	8620323	ASSY, DP LOWER PLATEN RECEIVER NO HEAT
1	94	8620171	ASSY FRAME WITH SUPPORTS
1	93	8620129	ASSY, UPPER PLATEN 120V LV 4.3" CLCD
1	92	8609117	DXM SHAFT CLAMP
REF	91	8607057	ASSY, LOWER PLATEN REMOVEABLE 8 INCH
REF	90	8607056	ASSY, LOWER PLATEN REMOVEABLE 10 INCH
REF	89	8607055	ASSY, LOWER PLATEN REMOVEABLE 12 INCH
REF	88	8607054	ASSY, LOWER PLATEN REMOVEABLE 14 INCH
REF	87	8607053	ASSY, LOWER PLATEN REMOVEABLE 16 INCH
REF	86	8607052	ASSY, LOWER PLATEN REMOVEABLE 17 INCH
1	85	8607051	ASSY, LOWER PLATEN REMOVEABLE 18 INCH
2	84	8603503	M-DXE PIN RETAINER
2	83	8603502	DXE MAIN SHAFT BUSHING
1	82	8603134	SPRING PLATE UPPER
2	81	8603133	DXM SPRING HOLDER
1	80	8603132	M-DXM PINION SHAFT
1	79	8603128	LINK MAIN LARGE 1/32 CHAMFER RIGHT
1	78	8603124	LINK MAIN LARGE 1/32 CHAMFER LEFT
1	77	8603118	DXE PIN FOLLOWER
1	76	8603117	DXE PIN STABILIZER
1	75	8603116	M- PIN ROD LARGE
1	74	8603115	PIN CRANK LARGE
1	73	8603110	DXE ADJUSTMENT SCREW CAP
2	72	8603105	DXE LINK FOLLOWER
2	71	8603103	M- LINK CRANK LARGE

**HIX Corporation**  
 1201 E 27th Terrace, Pittsburg, KS 66762  
 Phone: 816.233.8588 Fax: 816.233.1588  
 Email: mail@hixcorp.com www.hixcorp.com  
 This document and the information contained herein is the sole property of HIX Corporation. It will not be copied, reproduced, or disseminated in any form or by any means without prior written consent of HIX Corporation. Copyright © 2022

11230 DXM-SS 120V RP 4.3" ASSY, DXM-SS RP 4.3"  
 DWG NO: 8620334 REV B  
 Project: DX 4.3"  
 DO NOT SCALE SIZE D SHEET 1 OF 1