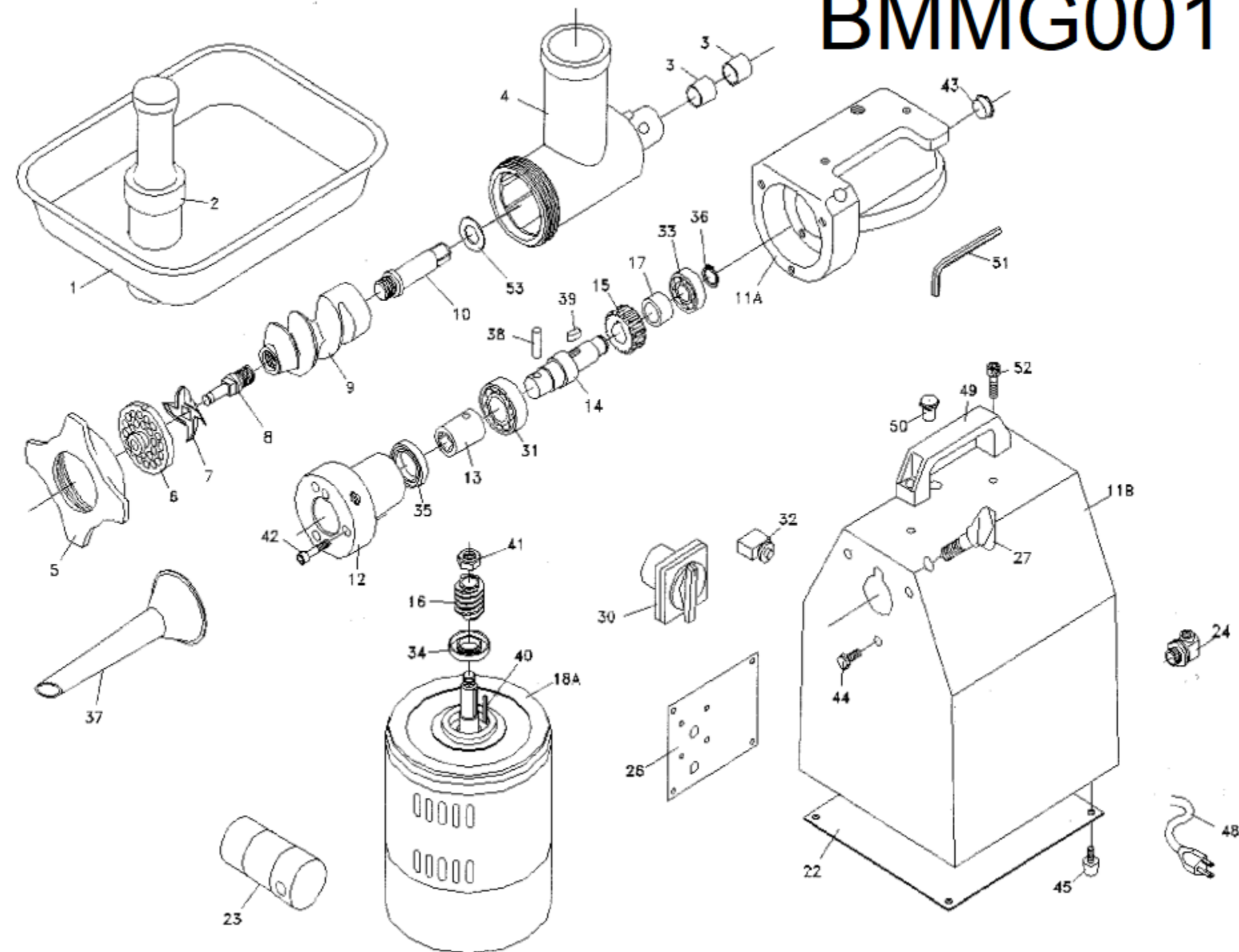


# BMMG001



#	DESCRIPTION OR NAME		
		27	THUB SCREW
1	FEEDER PAN	28	CENTRIFUGAL GOVERNOR PLATE
2	MEAT PUSHER	29	CENTRIFUGAL GOVERNOR
3	BALL BEARINGS 1915	30	SWITCH
4	GRINDING CHAMBER	31	BALL BEARING#6205
5	COUPLING COVER	32	RESET
6	PRESSURE PLATE	33	BALL BEARING#6203
7	REAMER	34	OIL SEALTC20*40*8
8	HOLDER	35	OIL SEALTC30*45*8
9	SPIRAL PROPELLER	36	C-TYPE SNAP RING S17
10	PLUNGER	37	MEAT FUNNEL
11	GEAR BOX	38	SPRING PIN 8*30
11	HOUSING	39	KEY 6*6*15
12	ATTACHMENT HUB	40	KEY 1/8*1/8*25
13	HUB SHAFT	41	NUT 1/2*20NF
14	WORM SHAFT	42	CAPSCREW5/16*1-1/4
15	WORM GEAR	43	OIL BAFFLE
16	WORM	44	BOLT 5/16*3/8
17	SPACER	45	RUBBER FOOT WITH SCREW
18	MOTOR	46	MACH SCREW 3/16*3/8
22	PLATE	47	MACH SCREW 3/16*3/8
23	CAPACITOR	48	ELECTRIC WIRE
24	CABLE TIE	49	HANDLE
25	POWER CORD & PLUG	50	OIL COCK
26	SPECIFICATION PLATE	51	WRENCH
		52	CAP SCREW5/16*1/2
		53	SPACER