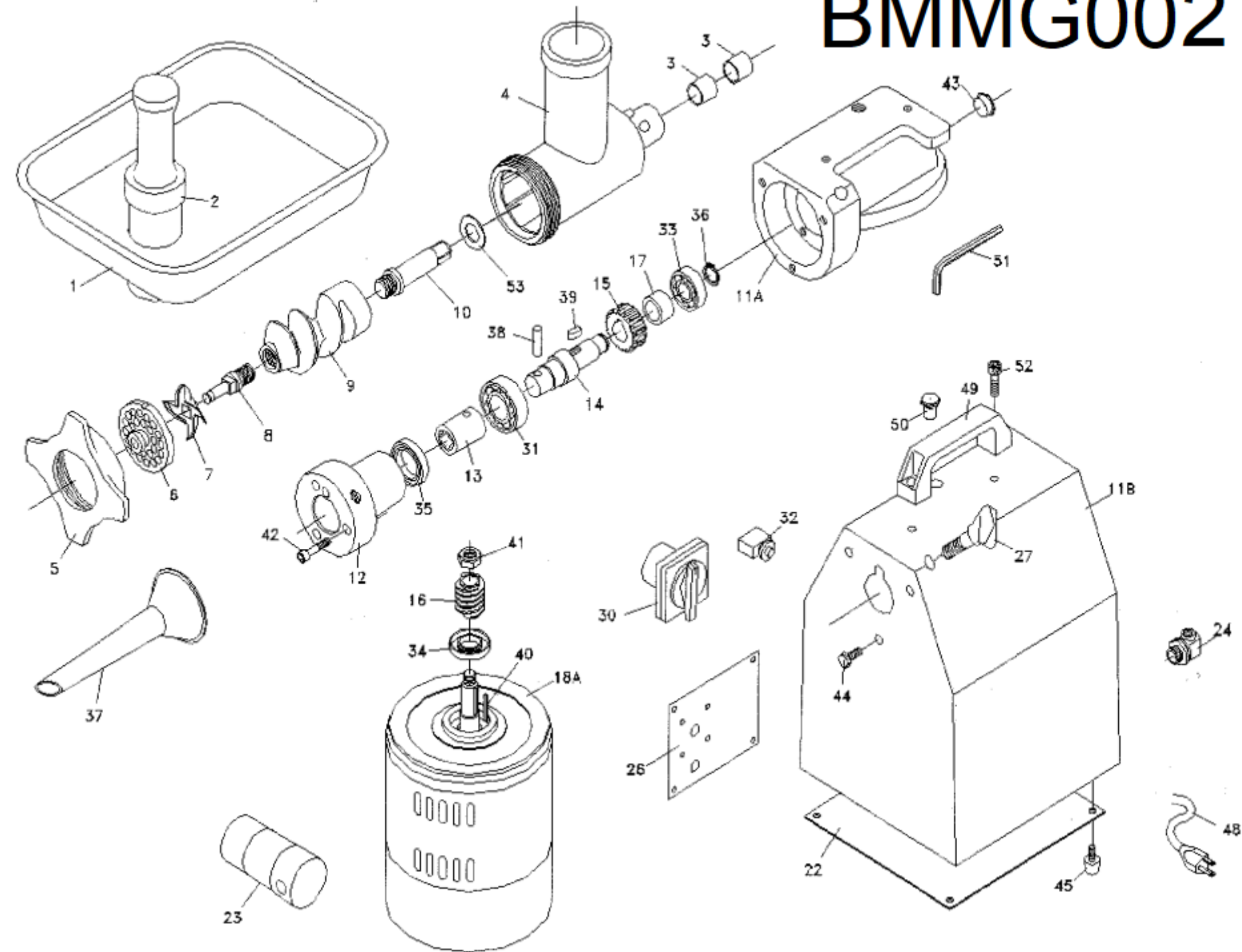


# BMMG002



ILLUS. NO. 2 BMMG002	DESCRIPTION OR NAME		
1	FEEDER PAN	31	BALL BEARING#6205
2	MEAT PUSHER	32	RESET
3	BALL BEARING#1915	33	BALL BEARING#6203
4	GRINDING CHAMBER	34	OIL SEAL TC20*40*8
5	COUPLING COVER	35	OIL SEAL TC30*45*8
6	PRESSURE PLATE-4,/6/8/10/12mm	36	C-TYPE SNAP RING SI7
7	REAMER	37	MEAT FUNNEL
8	HOLDER	38	SPRING PIN 8*30
9	SPRIAL PROPELLER	39	KEY6*6*15
10	PLUNGER	40	KEY1/8* 1/8*25
11	GEARBOX	41	NUT 1/2*20NF
11	HOUSING	42	CAP SREW 5/16*1-1/4
12	ATTACHMENT HUB	43	OIL BAFFLE
13	HUB SHAFT	44	BOLT 5/16*3/8
14	WORM SHAFT	45	RUBBER FOOT WITH SCREW
15	WORM GEAR	48	ELECTRIC WIRE
16	WORM	49	HANDLE
17	SPACER	50	OIL COCK
18	MOTOR	51	WRENCH
22	PLATE	52	CAP SCREW 5/16*1/2
23	CAPACITOR	53	SPACER
24	CABLE TIE		
25	POWER CORD & PLUG		
26	SPECIFICATION PLATE		
27	THUB SCREW		
28	CENTRIFUGAL GOVERNOR PLAT		
29	CENTRIFUGAL GOVERNOR		
30	SWITCH		